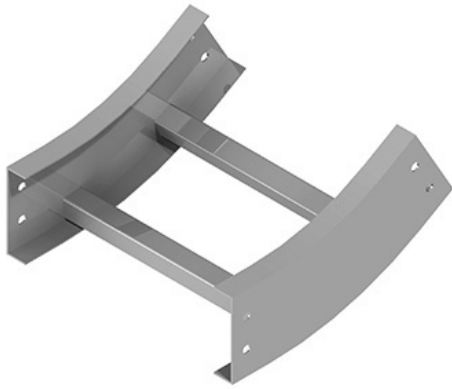




Cablofil
Vertical Inside 30 Elbow
Part No. P035863



Choose from an extensive selection of metallic ladder tray with a variety of rung and bottom styles to choose from. Finishes include steel, 304L and 316L stainless steel to meet the needs of any application. Rail heights range from 4" to 7" and width sizes are available up to 36".

Features & Benefits

Splices included

Specifications

General Info

Product Line	Cablofil	Finish	GC
UPC Number	800388332089	Country Of Origin	Mexico

Dimensions

Product Width US	24.0 in	Product Weight US	13.81 lb
Product Volume US	3.978 cu ft	Product Depth US	11.75 in
Product Height US	24.375 in		

Buy American Act Compliance

BAA	Yes
-----	-----
