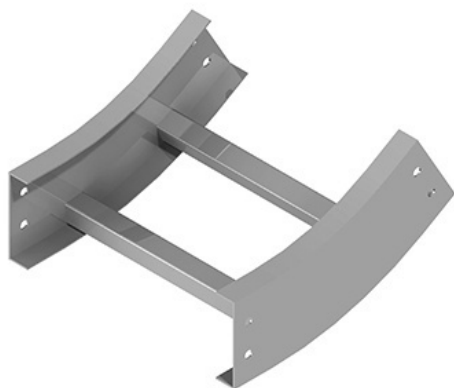




Cablofil
Vertical Inside 30 Elbow
Part No. P036283



Choose from an extensive selection of metallic ladder tray with a variety of rung and bottom styles to choose from. Finishes include steel, 304L and 316L stainless steel to meet the needs of any application. Rail heights range from 4" to 7" and width sizes are available up to 36".

Features & Benefits

Splices included

Specifications

General Info

Product Line	Cablofil	Finish	Hot Dipped Galvanized after Fabrication
UPC Number	800388332577	Country Of Origin	Mexico
Bottom Type	Ladder	Application Sector	Commercial, Industrial
Type	Vertical Elbows		

Dimensions

Product Width US	24.0 in	Product Weight US	15.051 lb
Product Volume US	4.405 cu ft	Product Depth US	12.75 in
Product Height US	24.875 in	Radius	24 in

Trade Programs

BAA	Yes
-----	-----