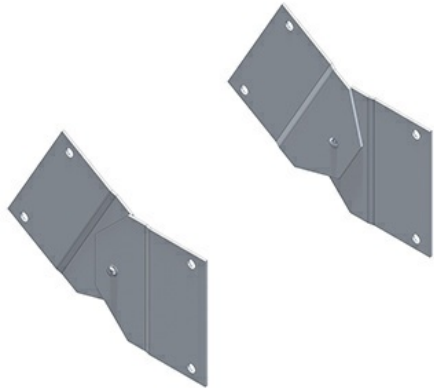




Cablofil  
**6A-VASP-GE 6H VERT ADJ SPLICE KIT (TRA)**  
Part No. P314192



The aluminum I-beam design of ITray is perfect for industrial installations with large diameter cables in long span situations, minimizing total tray width and creating a smooth transition between straight sections and fittings. A structural offset in the sidewall creates strong, mid-span splices that need fewer supports. Each splice snaps in place and stays without holding. Additionally, only four bolts are needed for each splice reducing hardware needs by 50%. These features allow Itray to be installed up to 30% faster than standard tray.

## Features & Benefits

Material: Aluminum Alloy 5052 - H32

Finish: Plain

Height (H): Tray height: 4", 5", 6", 7" (less 1/2")

Torque: 19 - 25 ft-lbs

## Specifications

### General Info

Product Line	Cablofil	Finish	Aluminum
UPC Number	800388200692	Country Of Origin	Mexico
Application Sector	Commercial, Industrial	Standard	UL Classified
Type	Splicing		

### Dimensions

Product Width US	1.92 in	Product Weight US	2.564 lb
Product Volume US	0.048 cu ft	Product Depth US	7.355 in
Product Height US	5.875 in		

### Trade Programs

BAA	Yes
-----	-----