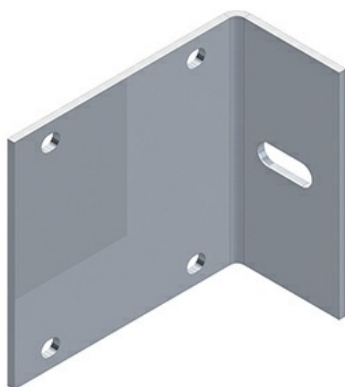




**Cablofil**  
**Vertical Hanger Splice Kit**  
Part No. P314198



The aluminum I-beam design of ITray is perfect for industrial installations with large diameter cables in long span situations, minimizing total tray width and creating a smooth transition between straight sections and fittings. A structural offset in the sidewall creates strong, mid-span splices that need fewer supports. Each splice snaps in place and stays without holding. Additionally, only four bolts are needed for each splice reducing hardware needs by 50%. These features allow Itray to be installed up to 30% faster than standard tray.

## Features & Benefits

Material: Aluminum Alloy 5052 - H32

Finish: Plain

Height (H): Tray height: 4", 5", 6", 7" (less 1/2")

Torque: 19 - 25 ft-lbs

Supports vertical tray using threaded rod (not shown)

## Specifications

### General Info

|                    |                        |                   |          |
|--------------------|------------------------|-------------------|----------|
| Product Line       | Cablofil               | Finish            | Aluminum |
| UPC Number         | 800388200753           | Country Of Origin | Mexico   |
| Application Sector | Commercial, Industrial | Type              | Splicing |

### Dimensions

|                   |             |                   |          |
|-------------------|-------------|-------------------|----------|
| Product Width US  | 3.143 in    | Product Weight US | 1.716 lb |
| Product Volume US | 0.046 cu ft | Product Depth US  | 6.502 in |
| Product Height US | 3.875 in    |                   |          |

### Trade Programs

|     |     |
|-----|-----|
| BAA | Yes |
|-----|-----|