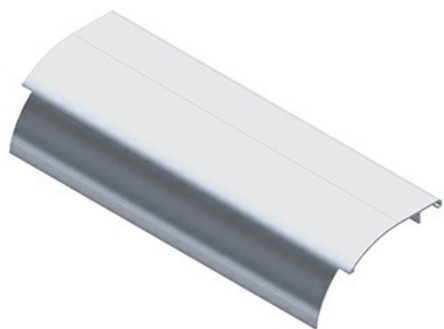




Cablofil
A-DO-18-S6 CABLE DROPOUT KIT 18W (TRA)
Part No. P314493



Cablofil Wiremesh Cable Tray concept based upon performance, safety and economy; three qualities which make Cablofil Wiremesh Cable Tray system preferred by installers. Cablofil adapts to the most complex configurations, and its structure gives maximum strength for minimum weight. The ease of creating fittings, carried out on site, as well as the wide range of unique and universal accessories gives complete freedom in routing combined with exceptionally fast installation.

Features & Benefits

- Protects cables when exiting and entering tray.
- 7" radius bend eases strain on cables.
- Slotted design allows for cable tie or velcro tiwrap cable attachment.
- Kit contains two EZ BN 1/4 and two CE 25 with one DROP OUT.

Specifications

General Info

Product Line	Cablofil	Finish	Aluminum
UPC Number	800388203778	Country Of Origin	Mexico
Application Sector	Commercial, Industrial	Standard	UL Classified
Type	Accessories		

Dimensions

Product Width US	17.313 in	Product Weight US	1.385 lb
Product Volume US	0.212 cu ft	Product Depth US	6.5 in
Product Height US	3.25 in		

Trade Programs

BAA	Yes
-----	-----