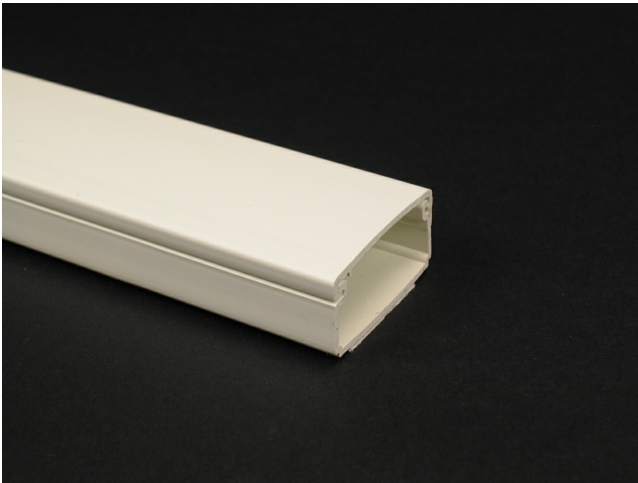




Wiremold  
Eclipse PN03 Latching Raceway Fitting  
Part No. PN03L10V



PN3 Series One-piece latching raceway with co-extruded hinge and adhesive backing. Available in 10' (3.0m) lengths.

## Features & Benefits

This product meets the material restrictions of RoHS

## Specifications

### General Info

Product Line	Wiremold	UPC Number	786776168907
Country Of Origin	United States	Application Sector	Commercial
Standard	cULus Listed	Type	Raceway

### Listing Agencies / 3rd Party Agencies

cULus ListingNumber	E90378	cULus Listed	Yes
---------------------	--------	--------------	-----

### Buy American Act Compliance

NAFTA	Yes
-------	-----

### Additional Information

RoHS Conformant	Yes	Product Environmental Profile	Yes
-----------------	-----	-------------------------------	-----

### Technical Information

Voltage	120.0 V
---------	---------