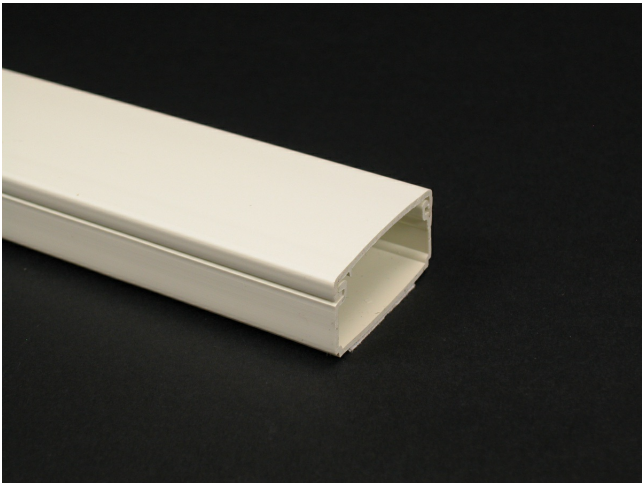




Wiremold  
Eclipse PN05 Latching Raceway Fitting  
Part No. PN05L08FW



PN05 Series One-piece latching raceway with co-extruded hinge and adhesive backing. Available in 8' (2.44m) lengths.

Features & Benefits

PN05 Series One-piece latching raceway with co-extruded hinge and adhesive backing. Available in 8' (2.44m) lengths.

Specifications

General Info

Product Line	Wiremold	Color	Fog White
UPC Number	786776035667	Country Of Origin	United States
Product Series	Eclipse Series	Installation Location	On Wall

Application Sector	Commercial, Residential	Standard	cULus Listed Raceway: File E90378 Guide RJTX. Complies with flammability requirements of UL-5A. Fittings: File E90377 Guide RJYT. Meets Article 388 of NEC. UL Listed for up to 600V. Meets Section 12-2600 of CEC.
--------------------	-------------------------	----------	---

Warranty Type	1-Year from Installation or 2-Years from Day of Sale	Type	Raceway
---------------	--	------	---------

Dimensions

Product Width US	1.125 in	Product Weight US	0.133 lb
Product Height US	0.625 in	Product Length US	96.456 in
Listing Agencies / 3rd Party Agencies			
cULus ListingNumber	E90378	cULus Listed	Yes
Trade Programs			
USMCA	Yes		
Additional Information			
RoHS Compliant	Yes	Product Environmental Profile	Yes
Technical Information			
Is Pre-Wired	No	Indoor/Outdoor	Indoor
Number of Channels	1	Voltage	600.0 V