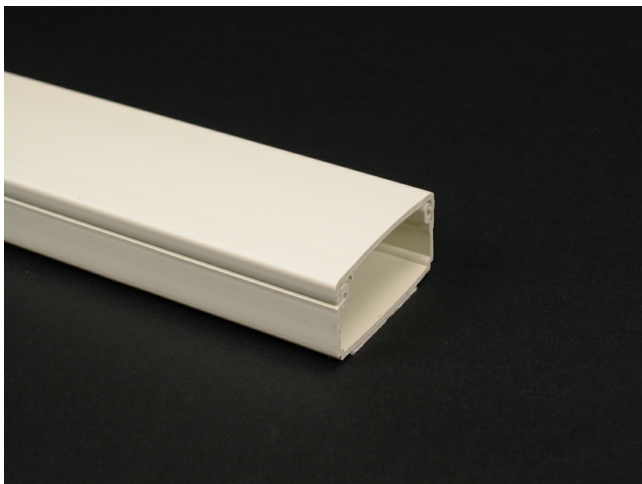




Wiremold  
Wiremold Eclipse PN05 Latching Raceway  
Part No. PN05L08WH



The Wiremold PN05 Series raceway is a single compartment solution for communication or power applications. Ideal for use in classrooms, offices, and hotel applications, or anywhere a small, low profile raceway is needed. Eclipse PN05 raceway is specifically designed for the workstation. They accept Ortronics Series II and TracJack outlets, Pass and Seymour Activate Series inserts, and Wiremold Open System device modules.

## Features & Benefits

This product meets the material restrictions of RoHS

## Specifications

### General Info

Product Line	Wiremold	Color	White
UPC Number	786776015850	Country Of Origin	United States
Application Sector	Commercial	Standard	cULus Listed Surface Nonmetallic Raceway: File E90377 Guide RJYT/RJYT7
Type	Raceway		

### Dimensions

Product Width US	96.13 in	Product Weight US	0.133 lb
Product Volume US	68.43 cu in	Product Depth US	0.63 in
Product Height US	0.625 in	Product Length US	96.456 in

## Listing Agencies / 3rd Party Agencies

cULus ListingNumber	E90378	cULus Listed	Yes
Trade Programs			
USMCA	Yes		
Additional Information			
RoHS Compliant	Yes	Product Environmental Profile	Yes
Technical Information			
Voltage	600.0 V		