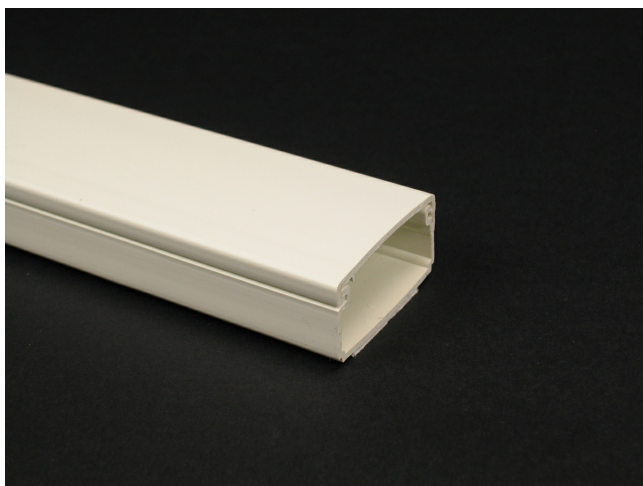




Wiremold
Eclipse PN05 Latching Raceway Fitting
Part No. PN05L10-W



PN5 Series One-piece latching raceway with co-extruded hinge and adhesive backing. Available in 10' (3.0m) lengths.

Features & Benefits

This product meets the material restrictions of RoHS

Specifications

General Info

Product Line	Wiremold	UPC Number	786776174786
Country Of Origin	United States	Application Sector	Commercial, Residential
Standard	cULus Listed Raceway: File E90378 Guide RJTX. Complies with flammability requirements of UL-5A. Fittings: File E90377 Guide RJYT. Meets Article 388 of NEC. UL listed for up to 600V. Meets Section 12-1600 of CEC	Type	Raceway

Dimensions

Product Width US	1.125 in	Product Weight US	0.133 lb
Product Height US	0.625 in	Product Length US	118.11 in

Listing Agencies / 3rd Party Agencies

cULus ListingNumber	E90378	cULus Listed	Yes
---------------------	--------	--------------	-----

Trade Programs

USMCA	Yes
-------	-----

Additional Information

RoHS Compliant	Yes	Product Environmental Profile	Yes
----------------	-----	-------------------------------	-----

Technical Information

Voltage	600.0 V
---------	---------
