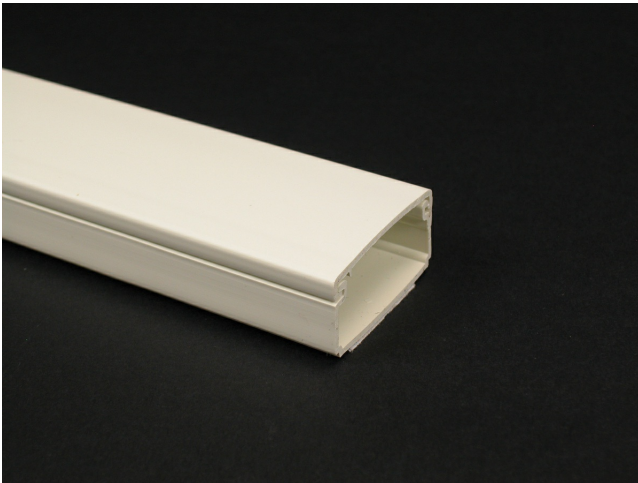




Wiremold
Eclipse PN10 Latching Raceway Fitting
Part No. PN10L08V



PN10 Series One-piece latching raceway with co-extruded hinge and adhesive backing. Available in 8' (2.44m) lengths.

Features & Benefits

PN10 Series One-piece latching raceway with co-extruded hinge and adhesive backing. Available in 8' (2.44m) lengths.

Specifications

General Info

Product Line	Wiremold	UPC Number	786776016277
Country Of Origin	United States	Application Sector	Residential/Commercial

Standard	cULus Listed Raceway: File E90378 Guide RJTX. Complies with flammability requirements of UL-5A. Fittings: File E90377 Guide RJYT. Meets Article 388 of NEC. UL Listed for up to 600V. Meets Section 12-2600 of CEC.	Type	Raceway
----------	---	------	---------

Dimensions

Product Width US	1.687 in	Product Height US	0.812 in
Product Length US	118.11 in		

Listing Agencies / 3rd Party Agencies

cULus ListingNumber	E90378	cULus Listed	Yes
---------------------	--------	--------------	-----

Buy American Act Compliance

NAFTA	Yes
-------	-----

Additional Information

RoHS Conformant	Yes	Product Environmental Profile	Yes
-----------------	-----	-------------------------------	-----

Technical Information

Voltage	600.0 V
---------	---------
