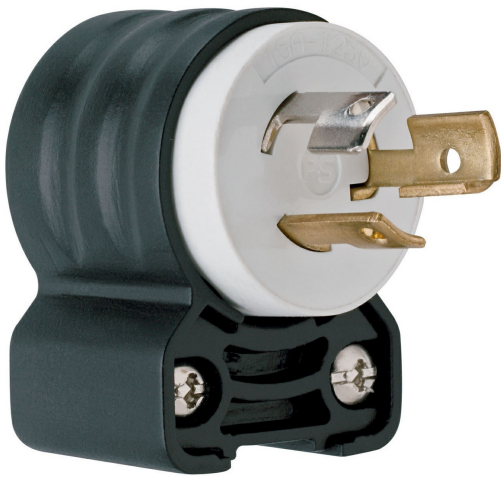




Pass and Seymour  
15A Angle Plug - Black Back Body, White Front Body  
Part No. PS4720SSAN



Turnlok® Plug Angle 3-Wire 15A 125A

## Features & Benefits

Angle plugs and adapters both allow for 4-position face rotation.

Angle adapters (sold separately) will accommodate all P&S Turnlok style plugs and connectors on a retrofit basis. Simply remove the straight handle body from the plug or connector face assembly, and replace with the angle adapter.

Angle plugs and adapters have the same wide cord diameter range (.230" - 1.150") that is present on all Turnlok plugs and connectors.

20/30A 3 Wire Turnlok: Right Angle Adapters are adjustable up to 8 positions.

Tri-drive assembly and cord-grip screws are standard on all angle plugs and adapters.

## Specifications

### General Info

Product Line	Pass & Seymour	Color	Black
Country Of Origin	Mexico	Application Sector	Commercial
Standard	UL Listed		

### Dimensions

Product Width US	1.53 in	Product Depth US	1.35 in
Product Height US	2.13 in		

### Listing Agencies / 3rd Party Agencies

cULus ListingNumber	146159	cULus Listed	Yes
---------------------	--------	--------------	-----

---

## Technical Information

---

Phase	3	Number of Wires	3
Amperage	15 A	Number of Poles	Double Pole
Wire Size	2 AWG	Voltage	125.0 V

---