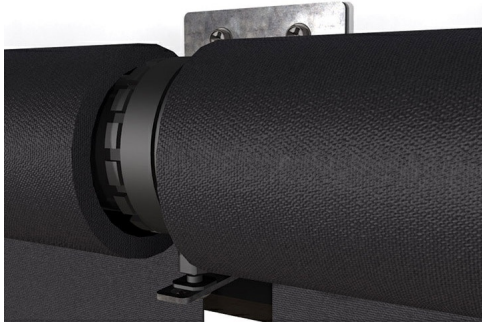




Shading Systems
Coupled Roller Shades
Part No. Qlink



Qlink allows you to operate a bank of shades with one motor and little effect on battery life, energy efficiency, or quiet operation. Connecting QMotion shades side-by-side not only allows you to cut costs, your shades will operate in unison when receiving a command by remote. For larger applications, Qlink coupled shades can cover spans as wide as 24' by 12' tall with a single motor. Available in both battery and wired options, Qlink shades operate in quiet unison while providing a consistent finish

Features & Benefits

Available with Gen 3, Qadvanced, and QIS shades	Available in battery, Cat5e/6 wired, and low voltage wired options
Coupler bracket enables adjustments for height and depth	Adjustable installation brackets allow for proper hembar alignment
Whisper-quiet motors for silent operation	Patented manual override feature allows for hand operation without damage to motors
Integrate with popular automation systems.	

Specifications

General Info

Product Line	Shading Systems	Application Sector	Residential
--------------	-----------------	--------------------	-------------

Dimensions

Maximum Product Height	144 in	Maximum Product Width	288 in
------------------------	--------	-----------------------	--------

Additional Information

Product Has Potential to Contribute to LEED	Yes
---	-----

Technical Information

Has Battery	Yes	Battery	4 AAA batteries
-------------	-----	---------	-----------------

Voltage	24.0 V
---------	--------