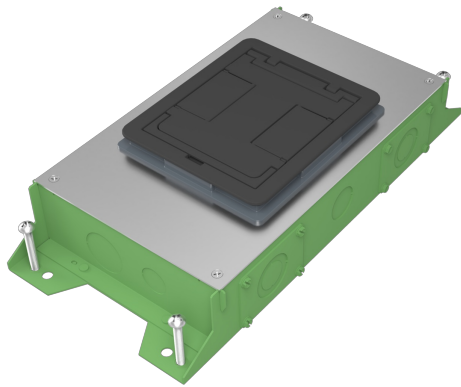




Wiremold
RFBA 2-Gang Floor Box - On Grade
Part No. RFBA2R30OG



Your go-to floor box just got better. Resource RFB Series Floor Boxes are designed for maximum efficiency throughout an entire building, bringing versatile recessed activations for power and data services to open space areas or directly to workstations. No matter what size you choose, components and accessories work across the entire line interchangeably. Simply mix-and-match as needed for your project. Improved wire and cable routing makes wire pulling much easier in adjacent compartments and around corners. Available in 2-, 4-, 6- and 10-gang models with a variety of covers, colors and profiles.* Installs in tile, stone, carpet, terrazzo, wood and polished concrete. Perfect for many applications, including schools, financial institutions, commercial office buildings, hospitality and residential.

Features & Benefits

One consistent design: Mix-and-match Resource RFBA Series Floor Boxes of any size with interchangeable components. Makes every project installation quick and efficient.

Improved wire and cable routing: Allows for easier wire pulling in adjacent compartments and around corners, reducing the overall cost for most cabling requirements.

Removable dividers post-pour: Fully adjustable before and after the concrete pour.

Universal sized conduit feed: Meets all requirements for each box. 2- and 4-gang shallow boxes accept a 1" conduit feed, while all standard boxes accept a 2" conduit feed.

Two finishes: Every box configuration is available in either a standard zinc-plated construction or a lightweight "slab-on-grade" finish with fusion-bonded epoxy corrosion resistant paint.

Adapts to most power and communication needs: Common mounting plates can be used for any of the Resource RFB Series Floor Boxes. Reduces overall life cycle cost.

Specifications

General Info

Product Line	Wiremold	Finish	Epoxy Coated
UPC Number	786564105343	Country Of Origin	Mexico
Installation Location	On Grade	Number of Knockouts	14
Application Sector	Commercial	Standard	UL514
Warranty Type	1-Year from Installation or 2-Years from Day of Sale	Type	Floor Box

Dimensions

Product Weight US	12.78 lb	Product Depth US	3.0 in
Product Length US	17.75 in	Knockout Size	1 in, 1-1/4 in, 3/4 in
Listing Agencies / 3rd Party Agencies			
cULus ListingNumber	QCIT	cULus Listed	Yes
Trade Programs			
USMCA	Yes		
Additional Information			
RoHS Compliant	Yes	Product Has Potential to Contribute to LEED	Yes
Product Environmental Profile	Yes		
Technical Information			
Floor Type	Carpet, Concrete, Polished Concrete, Terrazzo, Tile, Wood	Service Capacity	Dual
Minimum Floor Depth	3 in	Number of Gangs	2
Number of Compartments	2	Plenum	No
Box Capacity	2 Gangs	Indoor/Outdoor	Indoor
Box Type	On-Grade	Depth Behind Device Plates	3 in