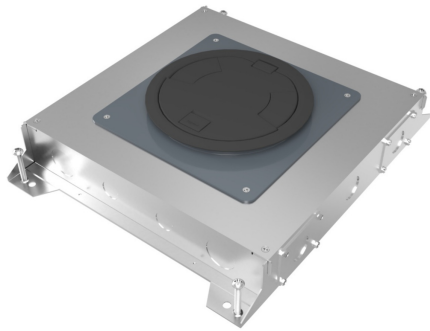




Wiremold
RFBA 6-Gang Round Cover Floor Box
Part No. RFBA6C30



Your go-to floor box just got better. RFBA Series Floor Boxes are designed for maximum efficiency throughout an entire building, bringing versatile recessed activations for power and data services to open space areas or directly to workstations. No matter what size you choose, components and accessories work across the entire line interchangeably. Simply mix-and-match as needed for your project. Improved wire and cable routing makes wire pulling much easier in adjacent compartments and around corners. Available in 2-, 4-, 6- and 10-gang models with a variety of covers, colors and profiles.* Installs in tile, stone, carpet, terrazzo, wood and polished concrete. Perfect for many applications, including schools, financial institutions, commercial office buildings, hospitality and residential.

Features & Benefits

One consistent design: Mix-and-match RFBA Series Floor Boxes of any size with interchangeable components. Makes every project installation quick and efficient.	Universal sized conduit feed meets all requirements for each box: 2- and 4-gang shallow boxes accept a 1" conduit feed, while all standard boxes accept a 2" conduit feed.
Improved wire and cable routing: Allows for easier wire pulling in adjacent compartments and around corners, reducing the overall cost for most cabling requirements.	Two finishes: Every box configuration is available in either a standard zinc-plated construction or a lightweight "slab-on-grade" finish with fusion-bonded epoxy corrosion resistant paint.
Removable dividers post-pour: Fully adjustable before and after the concrete pour.	Adapts to most power and communications needs: Common mounting plates can be used for any of the Resource RFB Series Floor Boxes. Reduces overall life cycle cost.

Specifications

General Info

Product Line	Wiremold	Finish	Pre-Galvanized
UPC Number	786564105473	Country Of Origin	Mexico
Installation Location	Above Grade	Number of Knockouts	22
Application Sector	Commercial	Standard	cULus Listed Metallic Outlet Boxes: File E2961 Guide QCIT Meets Article 314.27(C) of NEC.
Warranty Type	1-Year from Installation or 2-Years from Day of Sale	Type	Floor Box

Dimensions

Product Width US	16.25 in	Product Weight US	23.0 lb
Product Depth US	3.75 in	Knockout Size	1 in, 1-1/2 in, 1-1/4 in, 3/4 in

Listing Agencies / 3rd Party Agencies

cULus ListingNumber	QCIT	cULus Listed	Yes
---------------------	------	--------------	-----

Trade Programs

USMCA	Yes
-------	-----

Additional Information

RoHS Compliant	Yes	Product Environmental Profile	Yes
----------------	-----	-------------------------------	-----

Technical Information

Floor Type	Carpet, Concrete, Polished Concrete, Terrazzo, Tile, Wood	Service Capacity	Multiple
Minimum Floor Depth	3.75 in	Number of Gangs	6
Number of Compartments	6	Box Capacity	6 Gangs
Indoor/Outdoor	Indoor	Box Type	Above-Grade
Depth Behind Device Plates	2.56 in		