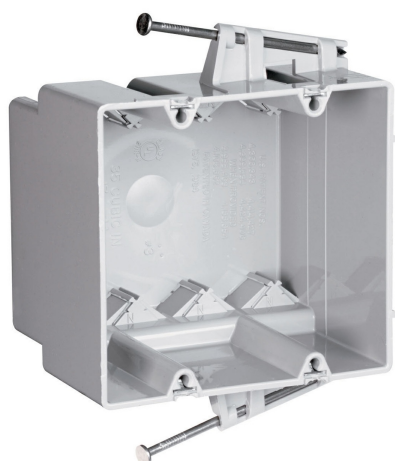




Pass and Seymour Switch and Outlet Box

Part No. S235RACMH



Double Gang Switch and Outlet Box, captive Mounting Nails on Each End. Four Auto-Clamps on each end with Quick/Click Entries, 3-inch depth for manufacture housing walls. 100 pack.

Features & Benefits

Quick/Click feature secures devices quickly and easily.

Does not strip when over-torqued.

4 Auto/Clamps on each end eliminate the need for separate cable clamps.

Easy installation, rectangular cutout.

Durable, impact-resistant thermoplastic box.

Innovative extras that cut installation time.

Specifications

General Info

Product Line	Pass & Seymour	Color	Gray
UPC Number	785007269857	Country Of Origin	United States
Standard	Residential/Commercial		

Dimensions

Cubic Capacity	35 in ³
----------------	--------------------

Additional Information

Product Environmental Profile	Yes
-------------------------------	-----

Technical Information

Number of Outlets	2
-------------------	---