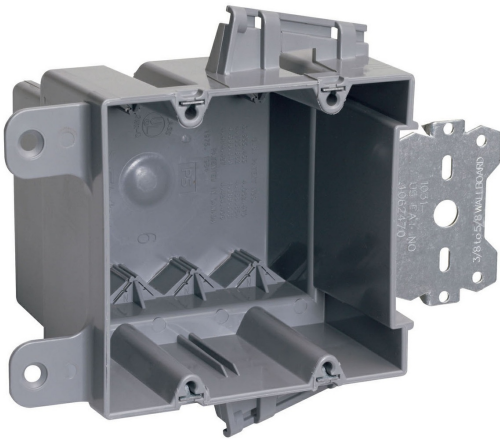




Pass and Seymour
Wood and Steel Stud Bracket Box with Quick/Click
Part No. S235S50AC



Double Gang, Wood and Steel Stud Bracket Box with Quick/Click, 3/8-inch offset for wood and steel stud mounting. Four Auto/Clamps on each end. For use with 3/8-inch to 5/8-inch wallboard. 50 pack.

Features & Benefits

Available in single, two, three, four gang and 4 inch square boxes.

Single gang include Quick/Entry feature.

Unique offset tab assures proper alignment to wall face.

Can be used for steel, aluminum, or wooden studs.

Molded of high-impact thermoplastic.

Two, three and four gang boxes and 4 inch square include exclusive Auto/Clamp feature.

Quick/Click feature offers fast and dependable installation of devices (single, two, three, and four gang).

Available with 3/8 inch offsets.

Can be installed on steel studs with most standard crimping tools in addition to CT1 Crimping Tool.

Specifications

General Info

Product Line	Pass & Seymour	Color	Gray
UPC Number	785007207354	Country Of Origin	United States
Material	Thermoplastic	Features	Auto Clamps, Quick Entry
Installation Location	Wall	Number of Knockouts	8
Application Sector	Commercial, Residential	Standard	UL listed
Warranty Type	1-Year Limited Warranty	Type	Outlet Box

Dimensions

Product Width US	3.969 in	Product Weight US	0.39 lb
------------------	----------	-------------------	---------

Product Volume US	35.0 cu in	Product Depth US	3.375 in
-------------------	------------	------------------	----------

Product Height US	3.969 in	Product Length US	3.969 in
-------------------	----------	-------------------	----------

Cubic Capacity	35 in ³		
----------------	--------------------	--	--

Listing Agencies / 3rd Party Agencies

cULus ListingNumber	143222	cULus Listed	Yes
---------------------	--------	--------------	-----

Additional Information

RoHS Compliant	Yes	Product Environmental Profile	Yes
----------------	-----	-------------------------------	-----

Technical Information

Number of Gangs	2	Indoor/Outdoor	Indoor
-----------------	---	----------------	--------

Cable Entry	Back, Bottom, Top	Box Shape	Square
-------------	-------------------	-----------	--------

Mounting Type	Stud Mount		
---------------	------------	--	--
