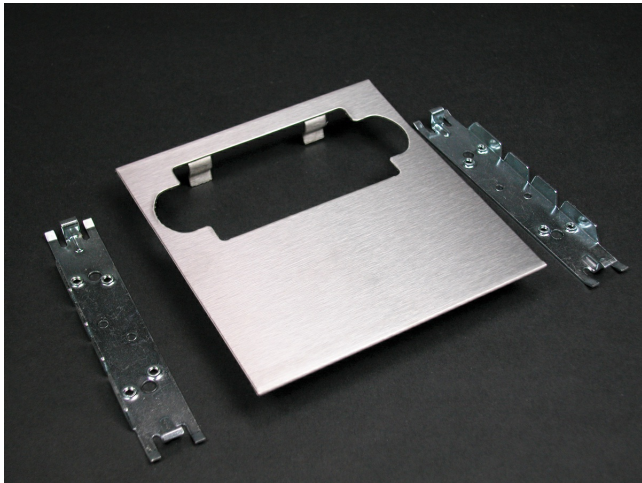




Wiremold
S4000 Single Device Plate Fitting
Part No. S4007C-1R



For horizontal mounting of surge suppression receptacles in S4000 Divided or Undivided Raceway. Also accepts most manufacturers' GFCI large twistlock, and rectangular faced single-gang wiring devices and two-port ACO. Use with commercially available flush plate (not furnished).

Features & Benefits

For horizontal mounting of surge suppression receptacles in S4000 Divided or Undivided Raceway. Also accepts most manufacturers' GFCI large twistlock, and rectangular faced single-gang wiring devices and two-port ACO. Use with commercially available flush plate (not furnished).

Specifications

General Info

Product Line	Wiremold	UPC Number	786776524321
Country Of Origin	United States	Application Sector	Commercial
Standard	cULus Listed Raceway: File E4376 Guide RJBT. Fittings: File E41751 Guide RJPR. Base & Blank Cover: Meets Article 386 of NEC. Meets Section 12-600 of CEC.	Type	Raceway

Dimensions

Product Width US	4.75 in	Product Length US	4.5 in
------------------	---------	-------------------	--------

Buy American Act Compliance

NAFTA	Yes
-------	-----

Additional Information

RoHS Conformant	Yes
-----------------	-----

Technical Information

Voltage	600.0 V
---------	---------
