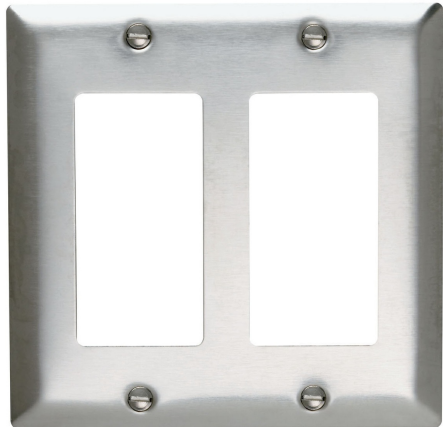




Pass and Seymour
2-Gang 302/304 Stainless Steel Wall Plate, 1 Decorator Opening
Part No. SS262



Smooth Metal Wall Plate 2-Gang Decorator 302/304 Stainless Steel

Features & Benefits

Type 302/304 Stainless Steel, non-magnetic: .032"^{nominal thickness} Brushed finish.

This alloy contains 18% chromium and 8% nickel for superior resistance to corrosion.

Recommended for use in food processing plants, dairies, chemical plants, and other industrial, institutional, and commercial applications where corrosive atmospheres exist.

Standard, Jumbo, and Tandem plates available, as well as special Panel plates up to 5-gangs high and 10-gangs wide.

Packaged in protective film, with finish-matching screws.

Variety of special plated finishes.

Paintable to match plastic plates.

Can be silk-screened or engraved, and custom punched with over 300 opening styles.

Specifications

General Info

Product Line	Pass & Seymour	Color	Stainless Steel
Finish	Metallic	UPC Number	785007129533
Country Of Origin	United States	Wall Plate Size	Standard Size
Wall Plate Type	Decorator	Application Sector	Commercial, Residential
Standard	CSA	Warranty Type	1-Year Limited Warranty
Type	Wall Plate		

Dimensions

Product Width US	4.56 in	Product Depth US	0.2 in
Product Height US	4.5 in		

Listing Agencies / 3rd Party Agencies

cULus Listed	Yes
--------------	-----

Additional Information

Product Environmental Profile	Yes
-------------------------------	-----

Technical Information

Thickness	0.032 in	Number of Gangs	2
Indoor/Outdoor	Indoor	Mounting Type	Box Mounted
Orientation	Vertical		
