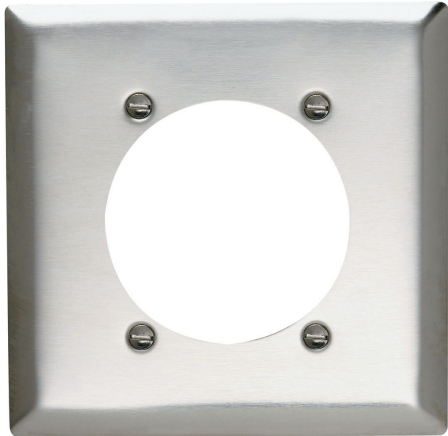




Pass and Seymour
Power Outlet Receptacle Openings, Two Gang, 302/304 Stainless Steel
Part No. SS701



TwoGang Power Outlet Receptacle Opening, 2.4688 in hole for 2.375-inch diameter device -4 mtg. holes, Smooth 302/304 Metal.

Features & Benefits

Type 302/304 Stainless Steel, non-magnetic: .032" nominal thickness. Brushed finish.

This alloy contains 18% chromium and 8% nickel for superior resistance to corrosion. Recommended for use in food processing plants, dairies, chemical plants, and other industrial, institutional, and commercial applications where corrosive atmospheres exist.

Standard, Jumbo, and Tandem plates available, as well as special Panel plates up to 5-gangs high and 10-gangs wide. Packaged in protective film, with finish-matching screws.

Variety of special plated finishes. Paintable to match plastic plates.

Can be silk-screened or engraved, and custom punched with over 300 opening styles.

Specifications

General Info

Product Line	Pass & Seymour	Country Of Origin	United States
Application Sector	Residential/Commercial	Standard	CSA

Dimensions

Product Width US	4.56 in	Product Depth US	0.2 in
Product Height US	4.5 in		

Listing Agencies / 3rd Party Agencies

cULus Listed	Yes
--------------	-----

Technical Information

Cutout	Power Outlet	Thickness	0.032 in
--------	--------------	-----------	----------

Number of Gangs	2
-----------------	---
