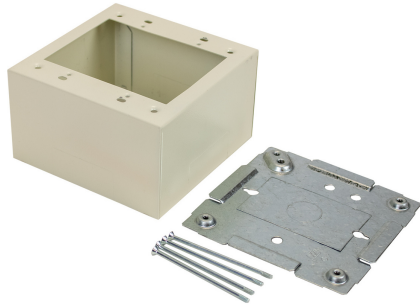




Wiremold
2400 Extra Deep Device Box Fitting
Part No. V2444-2



Two-gang device box with extra depth to allow installation of cabling that requires greater bend radius and storage. Cover has twistout on all four sides for 2400 Series Raceway. Base has knockout to enable extension from existing single-gang flush wall box and 1/2" and 1" concentric trade size KOs. Accepts industry standard faceplates for electrical and communication devices. NOTE: Accepts NEMA double-gang standard faceplates. Certified to Canadian Safety Standards for sale in Canada. When ordering this product for Canada, add "C" to the beginning of the part number to denote Canadian versions, i.e. "CV2444" or "C2444-FW".

Features & Benefits

Two-gang device box with extra depth to allow installation of cabling that requires greater bend radius and storage. Cover has twistout on all four sides for 2400 Series Raceway. Base has knockout to enable extension from existing single-gang flush wall box and 1/2" and 1" concentric trade size KOs. Accepts industry standard faceplates for electrical and communication devices. NOTE: Accepts NEMA double-gang standard faceplates. Certified to Canadian Safety Standards for sale in Canada. When ordering this product for Canada, add "C" to the beginning of the part number to denote Canadian versions, i.e. "CV2444" or "C2444-FW".

Specifications

General Info

Product Line	Wiremold	UPC Number	786776548082
Country Of Origin	United States	Application Sector	Residential/Commercial
Standard	cULus Listed Raceway: FileE4376 Guide RJBT. Fittings: File E41751 Guide RJPR. Base & Blank Cover: Meets Article 386 of NEC. Meets Section 12-600 of CEC.	Type	Raceway

Dimensions

Product Width US	4.75 in	Product Depth US	2.75 in
Product Length US	4.75 in		

Buy American Act Compliance

NAFTA	Yes
-------	-----

Additional Information

RoHS Conformant Yes

Product Environmental Profile Yes

Technical Information

Voltage 600.0 V
