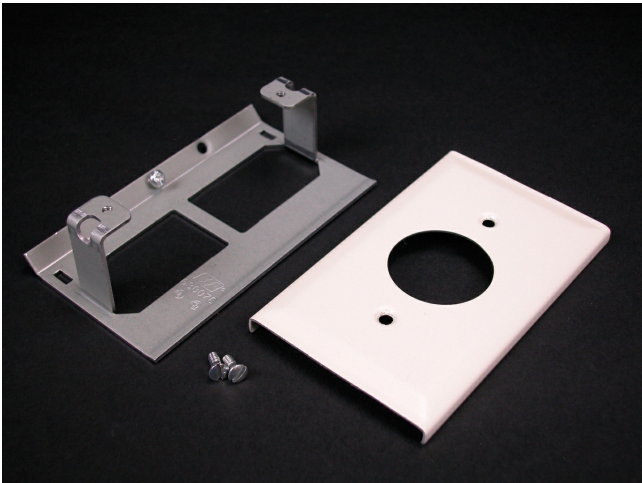




Wiremold  
3000 Single Receptacle Cover Fitting  
Part No. V3027AE



Installs commercially available straight blade and locking single receptacles with face diameters of 1.38" - 1.40" (35mm - 36mm) into 3000 Series Raceway. G3007C Device Bracket included. NOTE: Certified to Canadian Safety Standards for sale in Canada. When ordering these products, change the "V" color prefix to "CV" or the "G" color prefix to "CG" to denote the Canadian versions.

Features & Benefits

Installs commercially available straight blade and locking single receptacles with face diameters of 1.38" - 1.40" (35mm - 36mm) into 3000 Series Raceway. G3007C Device Bracket included. NOTE: Certified to Canadian Safety Standards for sale in Canada. When ordering these products, change the "V" color prefix to "CV" or the "G" color prefix to "CG" to denote the Canadian versions.

Specifications

General Info

Product Line	Wiremold	Color	Ivory
UPC Number	786776105391	Country Of Origin	United States
Application Sector	Commercial	Standard	cULus Listed Raceway:File E4376 Guide RJBT. Fittings: File E41751 Guide RJPR. Base & Blank Cover: Meets Article 386 of NEC. Meets Section 12-600 of CEC.
Type	Raceway		

Dimensions

Product Weight US	0.37 lb	Product Length US	4.5 in
-------------------	---------	-------------------	--------

Trade Programs

USMCA	Yes
-------	-----

Additional Information

RoHS Compliant	Yes	Product Environmental Profile	Yes
----------------	-----	-------------------------------	-----

Technical Information

Voltage	600.0 V
---------	---------