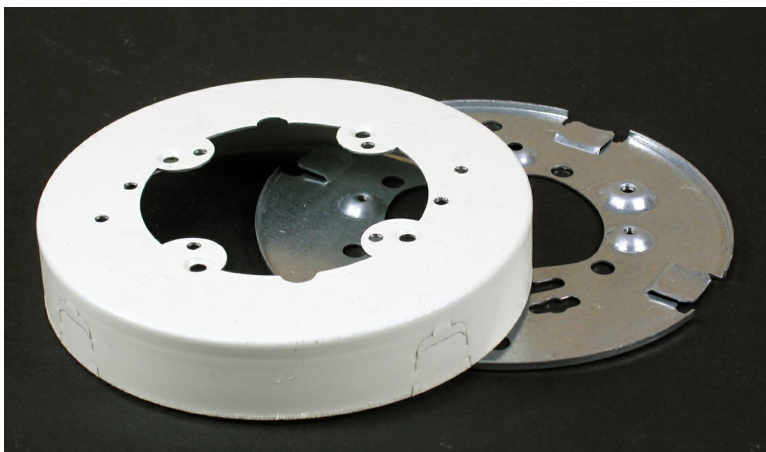




Wiremold
Wiremold 500/700 Series Open Base Extension Box Fitting, Ivory
Part No. V5737



Wiremold 500 Series and 700 Series raceways are ideal for surface mounting small amounts of electrical wiring or communication cables. These rugged raceways offer a low profile appearance which blend with any decor. Available in our exclusive ScuffCoat finish.

Features & Benefits

Mounts onto 3 1/4" or 4" (83mm or 102mm) conduit boxes, or other recessed outlets.

Cover accepts devices with mounting screw centers of 2 3/4", 3 1/2", or 4 1/16" (70mm, 89mm, or 103mm).

Can be used with 5736 Blank Cover as a pull or junction box.
Outside diameter 4 3/4" (121mm).

Specifications

General Info

Product Line	Wiremold	Color	Ivory
UPC Number	786776070408	Country Of Origin	United States
Application Sector	Commercial	Standard	cULus Listed Surface Metal Raceway: File E41751: Guide RJPR
Type	Raceway		

Dimensions

Product Width US	4.75 in	Product Weight US	0.5 lb
Product Volume US	17.71 cu in	Product Depth US	1.0 in
Product Height US	4.75 in		

Listing Agencies / 3rd Party Agencies

cULus ListingNumber	E41751	cULus Listed	Yes
---------------------	--------	--------------	-----

Trade Programs

USMCA	Yes
-------	-----

Additional Information

RoHS Compliant	Yes	Product Environmental Profile	Yes
----------------	-----	-------------------------------	-----
