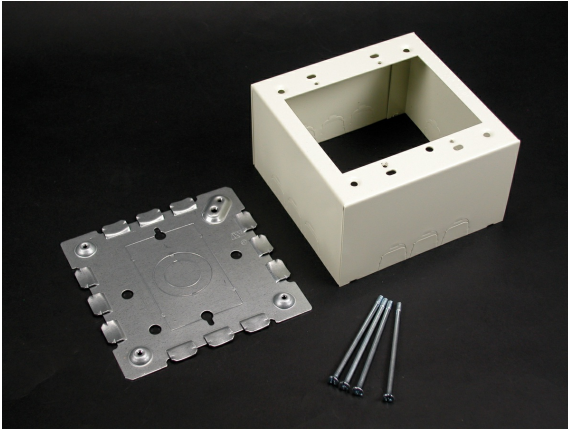




Wiremold  
Wiremold 500/700 Series Two-Gang Extra Deep Switch and Receptacle Box Fitting, Ivory  
Part No. V5744-2



Wiremold 500 Series and 700 Series raceways are ideal for surface mounting small amounts of electrical wiring or communication cables. These rugged raceways offer a low profile appearance which blend with any decor. Available in our exclusive ScuffCoat finish.

## Features & Benefits

This product meets the material restrictions of RoHS

## Specifications

### General Info

Product Line	Wiremold	Color	Ivory
UPC Number	786776070507	Country Of Origin	United States
Application Sector	Commercial	Standard	cULus Listed Surface Metal Raceway: File E41751: Guide RJPR
Type	Raceway		

### Dimensions

Product Width US	4.88 in	Product Weight US	0.93 lb
Product Volume US	68.59 cu in	Product Depth US	2.88 in
Product Height US	4.88 in		

### Buy American Act Compliance

NAFTA	Yes
-------	-----

### Additional Information

RoHS Conformant	Yes	Product Environmental Profile	Yes
-----------------	-----	-------------------------------	-----

---

## Technical Information

---

Voltage	300.0 V
---------	---------

---