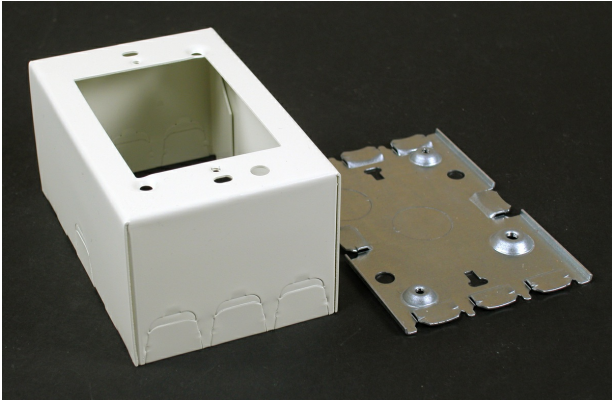




Wiremold
Wiremold 500/700 Series Single-Gang Extra Deep Switch and Receptacle Box Fitting, Ivory
Part No. V5744



Wiremold 500 Series and 700 Series raceways are ideal for surface mounting small amounts of electrical wiring or communication cables. These rugged raceways offer a low profile appearance which blend with any decor. Available in our exclusive ScuffCoat finish.

Features & Benefits

This product meets the material restrictions of RoHS

Specifications

General Info

| | | | |
|--------------------|--------------|-------------------|--|
| Product Line | Wiremold | Color | Ivory |
| UPC Number | 786776070477 | Country Of Origin | United States |
| Application Sector | Commercial | Standard | cULus Listed Surface Metal Raceway: File E41751: Guide RJPR |
| Type | Raceway | | |

Dimensions

| | | | |
|-------------------|-------------|-------------------|---------|
| Product Width US | 4.75 in | Product Weight US | 0.7 lb |
| Product Volume US | 41.04 cu in | Product Depth US | 2.88 in |
| Product Height US | 3.0 in | | |

Buy American Act Compliance

| | |
|-------|-----|
| NAFTA | Yes |
|-------|-----|

Additional Information

| | | | |
|-----------------|-----|-------------------------------|-----|
| RoHS Conformant | Yes | Product Environmental Profile | Yes |
|-----------------|-----|-------------------------------|-----|

Technical Information

| | |
|---------|---------|
| Voltage | 300.0 V |
|---------|---------|