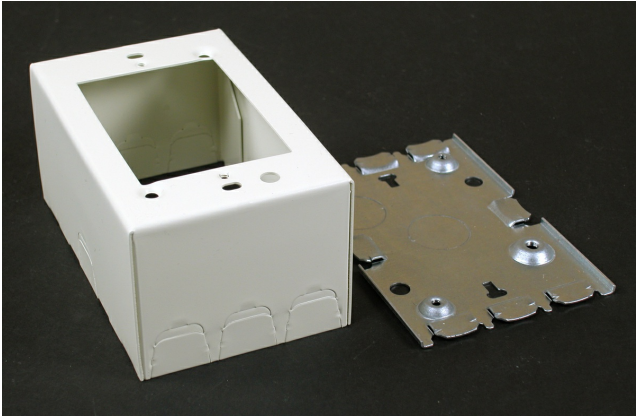




Wiremold
Wiremold 500/700 Series Single-Gang Deep Switch and Receptacle Box Fitting, Ivory
Part No. V5744S



Wiremold 500 Series and 700 Series raceways are ideal for surface mounting small amounts of electrical wiring or communication cables. These rugged raceways offer a low profile appearance which blend with any decor. Available in our exclusive ScuffCoat finish.

Features & Benefits

This product meets the material restrictions of RoHS

Specifications

General Info

Product Line	Wiremold	Color	Ivory
UPC Number	786776070484	Country Of Origin	United States
Product Series	500 Series, 700 Series	Installation Location	On Wall
Application Sector	Commercial, Residential	Standard	cULus Listed Surface Metal Raceway: File E41751: Guide RJPR
Warranty Type	1-Year from Installation or 2-Years from Day of Sale	Type	Raceway Device Box

Dimensions

Product Width US	4.75 in	Product Weight US	0.72 lb
Product Volume US	35.38 cu in	Product Depth US	2.38 in
Product Height US	3.13 in	Knockout Size	1 in, 1/2 in

Trade Programs

USMCA	Yes
-------	-----

Additional Information

RoHS Compliant	Yes	Product Environmental Profile	Yes
----------------	-----	-------------------------------	-----

Technical Information

Is Pre-Wired	No	Number of Gangs	1
--------------	----	-----------------	---

Indoor/Outdoor	Indoor
----------------	--------
