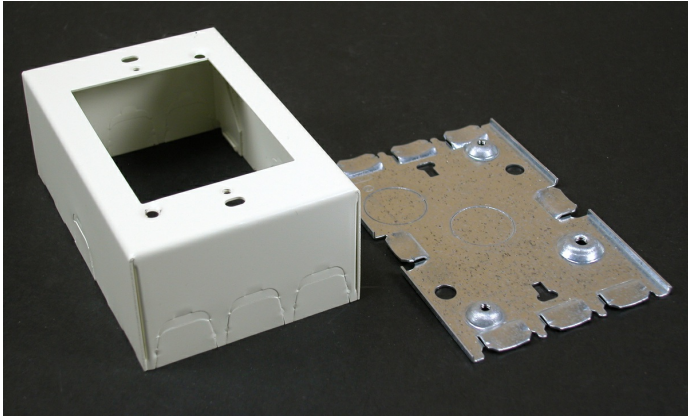




Wiremold  
Wiremold 500/700 Series Combination Switch and Receptacle Box Fitting, Ivory  
Part No. V5745



Wiremold 500 Series and 700 Series raceways are ideal for surface mounting small amounts of electrical wiring or communication cables. These rugged raceways offer a low profile appearance which blend with any decor. Available in our exclusive ScuffCoat finish.

## Features & Benefits

This product meets the material restrictions of RoHS

## Specifications

### General Info

|                    |              |                   |   |
|--------------------|--------------|-------------------|---|
| Product Line       | Wiremold     | Color             | Ivory   |
| UPC Number         | 786776070514 | Country Of Origin | United States   |
| Application Sector | Commercial   | Standard          | cULus Listed Surface Metal Raceway: File E41751: Guide RJPR |
| Type               | Raceway      |                   |   |

### Dimensions

|                   |             |                   |         |
|-------------------|-------------|-------------------|---------|
| Product Width US  | 4.75 in     | Product Weight US | 0.6 lb  |
| Product Volume US | 26.79 cu in | Product Depth US  | 1.88 in |
| Product Height US | 3.0 in      |                   |         |

### Additional Information

|                |     |                               |     |
|----------------|-----|-------------------------------|-----|
| RoHS Compliant | Yes | Product Environmental Profile | Yes |
|----------------|-----|-------------------------------|-----|