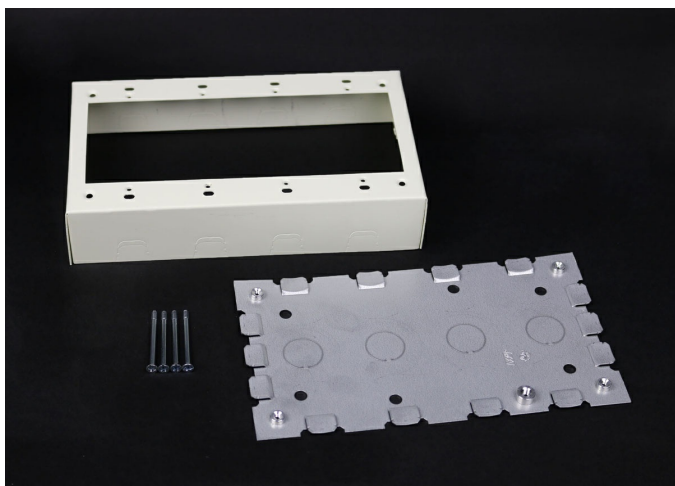




Wiremold
500/700 Four-Gang Switch and Receptacle Box Fitting
Part No. V5748-4



For deep switches and receptacles. Base has two 1/2" trade size KOs. Larger gang boxes available by special order. Four-gang: 4 5/8" L x 8 11/32" W (117mm x 212mm). NOTE: Certified to Canadian Safety Standards for sale in Canada. When ordering these products, change the "V" color prefix to "VC" to denote the Canadian versions.

Features & Benefits

For deep switches and receptacles.

Larger gang boxes available by special order. Four-gang: 4 5/8" L x 8 11/32" W (117mm x 212mm).

When ordering these products, change the "V" color prefix to "VC" to denote the Canadian versions.

Base has two 1/2" trade size KOs.

NOTE: Certified to Canadian Safety Standards for sale in Canada.

Specifications

General Info

Product Line	Wiremold	Color	Ivory
UPC Number	786776039955	Country Of Origin	United States
Application Sector	Commercial, Residential	Standard	cULus Listed Raceway: File E4376 Guide RJBT. Fittings: File E41751 Guide RJPR. Meets Article 386 of NEC. Meets Section 12-1600 of CEC.
Type	Raceway		

Dimensions

Product Width US	8.344 in	Product Weight US	1.22 lb
Product Depth US	1.75 in	Product Length US	4.625 in

Trade Programs

USMCA	Yes
-------	-----

Additional Information

RoHS Compliant	Yes	Product Environmental Profile	Yes
----------------	-----	-------------------------------	-----

Technical Information

Voltage	600.0 V
---------	---------
