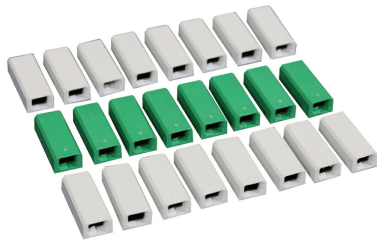




Wiremold
2000 Pressure-Type Wire Connectors
Part No. W30/W30G



W30 - For common connection of two, three or four No. 12 or No. 14 solid copper conductors. Packed 24 pieces per carton (16 W30 and 8 W30G). W30G - For connection of equipment grounding of 2, 3, or 4 solid conductors No. 14 or No. 12 AWG. 300V maximum. 20A 105 degrees C maximum. NOTE: Not for use with aluminum conductors.

Features & Benefits

W30 - For common connection of two, three or four No. 12 or No. 14 solid copper conductors.

Packed 24 pieces per carton (16 W30 and 8 W30G). W30G - For connection of equipment grounding of 2, 3, or 4 solid conductors No. 14 or No. 12 AWG. 300V maximum. 20A 105 degrees C maximum.

NOTE: Not for use with aluminum conductors.

Specifications

General Info

Product Line	Wiremold	UPC Number	786776130676
Country Of Origin	United States	Product Series	2000 Series

			cULus Listed Base & Blank Cover: File E4376 Guide RJBT. Multioutlet Assemblies: File E15191 Guide PVGT. Fittings: File E41751 Guide RJPR. Base & Blank Cover& Plugmold Series w/Snapcoil Harness: Meets Article 386 of NEC. Meets Section 12-3032 of CEC. Plugmold Wired Sections: Meets Article 380 of NEC. Meets Section 12-3032 of CEC.
Application Sector	Commercial, Education, Entertainment, Healthcare, Hospitality, Retail	Standard	

Warranty Type	1-Year from Installation or 2-Years from Day of Sale	Type	Accessories
Dimensions			
Product Weight US	0.01 lb		
Listing Agencies / 3rd Party Agencies			
cULus ListingNumber	E13382	cULus Listed	Yes
Trade Programs			
USMCA	Yes		
Additional Information			
RoHS Compliant	Yes		
Technical Information			
Amperage	20 A	Indoor/Outdoor	Indoor
Voltage	300.0 V	Environmental Conditions	Dry interior locations