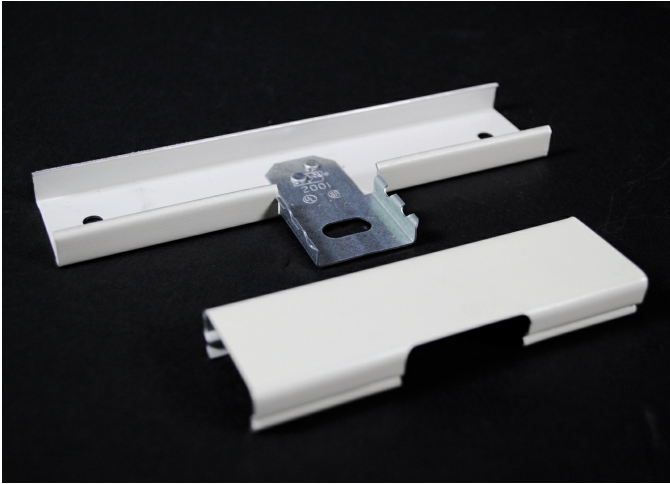




Wiremold
STL TEE 2000 WHITE
Part No. WH2015



Plugmold® Multioutlet Systems are available in a wide variety of lengths and fittings and in a variety of finishes to provide versatile solutions for many applications. Plugmold options include single or alternating circuits, standard or isolated ground receptacles, GFCI protection, tamper-resistant protection, USB charging, Snapicoil® harnesses of prewired receptacles, and cord-ended units. Plugmold® Multioutlet Systems are available in black or ivory ScuffCoat™ finish, painted white or gray enamel steel, stylish stainless steel, anodized aluminum and durable textured ivory nonmetallic. The painted steel product works with many types of decor and is paintable to integrate with most color schemes. Durable stainless steel and anodized aluminum Plugmold products are corrosion-resistant, making them ideal for labs.

Features & Benefits

For branches at right angles. Couplings furnished.

Specifications

General Info

Product Line	Wiremold	UPC Number	786776142280
Country Of Origin	United States	Number of Receptacles	0
Application Sector	Commercial	Standard	Fittings: File E41751
Type	Plugmold		

Dimensions

Product Weight US	0.34 lb
-------------------	---------

Listing Agencies / 3rd Party Agencies

cULus ListingNumber	E41751	cULus Listed	Yes
---------------------	--------	--------------	-----

Trade Programs

USMCA	Yes
-------	-----

Additional Information

RoHS Compliant	Yes		
Technical Information			
Enclosure Type	Steel	Voltage	125.0 V
Environmental Conditions	Dry interior locations		