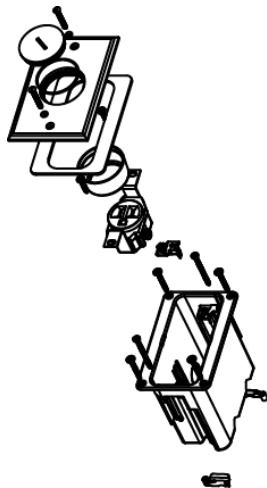




Wiremold
WMFB1SRB Series Single-Gang Floor Box Assembly
Part No. WMFB1SRB



Includes single-gang box, one 15A tamper-resistant receptacle, and brass cover with one screw plug. For hole cut dimensions, see installation instructions sheet. Box Dimensions: 2 1/8" W x 3 3/4" L x 3 7/8" D (54mm W x 95mm L x 98mm D) Device Plate: 3 1/8" W x 4 15/16" L (79mm W x 125mm L).

Features & Benefits

Includes single-gang box, one 15A tamper-resistant receptacle, and brass cover with one screw plug.

Box Dimensions: 2 1/8" W x 3 3/4" L x 3 7/8" D (54mm W x 95mm L x 98mm D) Device Plate: 3 1/8" W x 4 15/16" L (79mm W x 125mm L).

For hole cut dimensions, see installation instructions sheet.

Specifications

General Info

Product Line	Wiremold	UPC Number	786564053927
Country Of Origin	China	Construction	Not Assembled
Cover Style	Surface	Cover Material	Brass
Application Sector	Commercial, Residential	Standard	cULus Listed Nonmetallic Outlet Boxes: File E143222 Guide QCMZ. Meets Article 314.27(C) of NEC.
Warranty Type	1-Year from Installation or 2-Years from Day of Sale	Type	Floor Box

Dimensions

Product Width US	2.125 in	Product Weight US	0.95 lb
------------------	----------	-------------------	---------

Product Depth US	3.875 in	Knockout Size	1/2 in, 3/4 in
------------------	----------	---------------	----------------

Listing Agencies / 3rd Party Agencies

cULus Listed	Yes
--------------	-----

Additional Information

RoHS Compliant	Yes
----------------	-----

Technical Information

Floor Type	Wood	Service Capacity	Single
Minimum Floor Depth	5 in	Box Capacity	1 Gang
Cable Entry	Through Floor	Box Type	Recessed
Number of Outlets	1	Depth Behind Device Plates	3.87 in