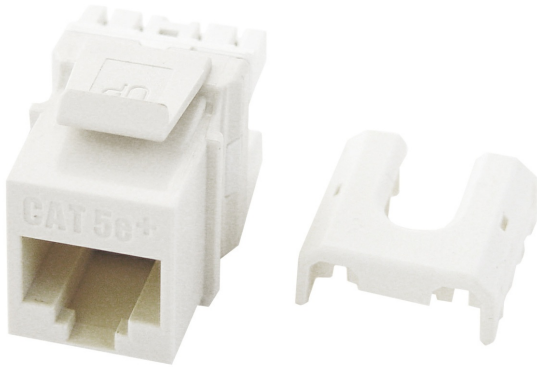




On-Q  
**Discontinued - CAT5E RJ45 KEYSTONE INSERTS(25)-WHT, NO SUB**  
Part No. WP3450WHV9



The vertical design of this high-quality insert makes punchdown termination easy. This insert is for use in all Keystone wall plates and is available in multiple colors, as well as convenient contractor packs. It ensures Category 6 performance standard compliance and includes rear retention caps for secure wire termination.

## Features & Benefits

Ensures Category 6 performance standard compliance

Rear retention caps ensure secure wire termination

Vertical design for easy punchdown termination

T568A and T568B wiring labels included

Meets Category 5e described in TIA/EIA-568-B.2

Insertion and extraction life is 750 Cycles Min

Jack housing is high-impact, flame resistant plastic, UL 94V-0

Spring wire is phosphor bronze alloy plated with 50 micro-inch of gold over 100 micro-inches of nickel

Also available in contractor pack of 50 (WP3450-WH-50)

## Specifications

### General Info

Product Line	On-Q	Color	White
UPC Number	804428031710	Country Of Origin	Taiwan, Province Of China
Application Sector	Residential	Standard	CSA, cULus, RoHS, ANSI/UL 1863, Flame-Retardant Plastic UL 94V-0

### Technical Information

Termination Style	Punchdown	Cable Type	Cat5e
-------------------	-----------	------------	-------

---

Environmental Conditions	0 to 93% (relative humidity, non-condensing)
--------------------------	--

---