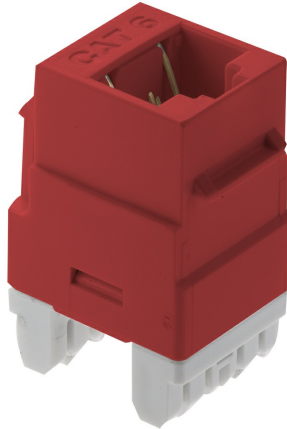




On-Q
Cat 6 RJ45 Keystone Connector
Part No. WP3460RE



Upgrade your network infrastructure with this Cat 6 RJ45 Keystone Connector in red. Designed for use in all Keystone Wall Plates, it features a standard RCA front jack that connects to Cat5, Cat5e, or Cat6 cables terminated with RJ-45 plugs. The vertical design simplifies punchdown termination, and rear retention caps ensure secure wire connections.

Features & Benefits

Standard RCA front jack	Connects to Cat5, Cat5e, or Cat6 cables terminated with RJ-45 plugs Rear retention caps ensure secure wire termination
Vertical design for easy punchdown termination	T568A and T568B wiring labels included
Meets Category 6 described in TIA/EIA-568-B.2	Insertion and extraction life is 750 Cycles Min
Jack housing is high-impact, flame resistant plastic, UL 94V-0	Spring wire is phosphor bronze alloy plated with 50 micro-inch of gold over 100 micro-inches of nickel

Specifications

General Info

Product Line	On-Q	Color	Red
UPC Number	804428024446	Country Of Origin	Taiwan, Province Of China
Application Sector	Residential	Standard	CSA, cULus, RoHS, ANSI/UL 1863, Flame-Retardant Plastic UL 94V-0

Technical Information

Termination Style	Punchdown	Cable Type	Cat6
Environmental Conditions	0 to 93% (relative humidity, non-condensing)		