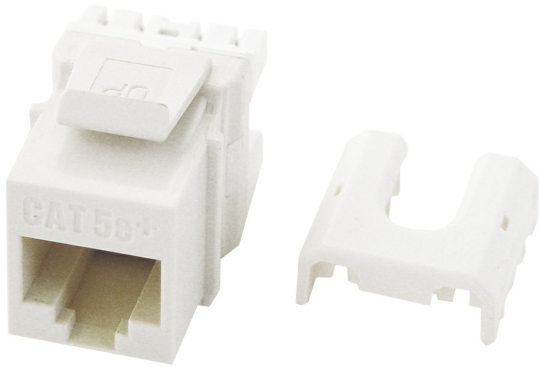




On-Q  
Cat 5e Quick Connect RJ45 Keystone Insert, White  
Part No. WP3475WH



Quick Connect RJ45 Cat 5e T568 A/B Keystone Insert

## Features & Benefits

ETL Verified to Category 5e component standard: Ensures standards compliance

RJ45 Inserts can be terminated with any 110 punchdown tool

Exceeds EIA/TIA 568A/B Cat 5e Performance Specifications

Available in Black, Brown, White, Light Almond, Grey, Blue, Orange, Ivory and Red

Contractor packs available in quantities of 50. To order, use part number WP3475-LA-50

## Specifications

### General Info

|                    |                          |                   |   |
|--------------------|--------------------------|-------------------|---|
| Product Line       | On-Q                     | Color             | White   |
| UPC Number         | 804428036715             | Country Of Origin | Taiwan, Province Of China   |
| Features           | Quick Connect Compatible | Package Quantity  | 1   |
| Application Sector | Residential              | Standard          | UL (UL/ANSI 1863), CSA (CAN/CSA-C22.2 No. 182.4-1990), IEEE 802.3an 10GBase-T, TIA 568-B.2-10, RoHS |

### Technical Information

|                          |  |            |        |
|--------------------------|--|------------|--------|
| Termination Style        | Punchdown                                    | Cable Type | Cat 5e |
| Environmental Conditions | 0 to 93% (relative humidity, non-condensing) |            |        |