

LMSW-2XX, LMDW-2XX, LMSH-SW2XX, LMSW-6XX-S BUTTON KIT ENGRAVING FORM

PROJECT INFORMATION

Provide complete information for button engraving by **ELECTRONIC SUBMISSION ONLY**. No hand written submissions please. Buttons will be engraved exactly as specified on this form. A separate form is required per unique engraving type. Submit completed forms to your regional customer service team for processing.

| |
|----------------------|
| PROJECT NAME |
| WATTSTOPPER QUOTE ID |
| DISTRIBUTOR P.O.# |

SHIPPING INFORMATION

| | | |
|---------|-----|-----|
| NAME | | |
| COMPANY | | |
| ADDRESS | | |
| CITY | ST | ZIP |
| PHONE | FAX | |

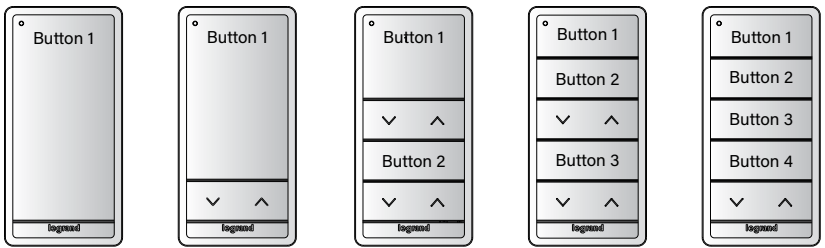
WATTSTOPPER ORDER #
(INTERNAL USE ONLY)

ENGRAVING INFORMATION

1. SELECT A PRODUCT

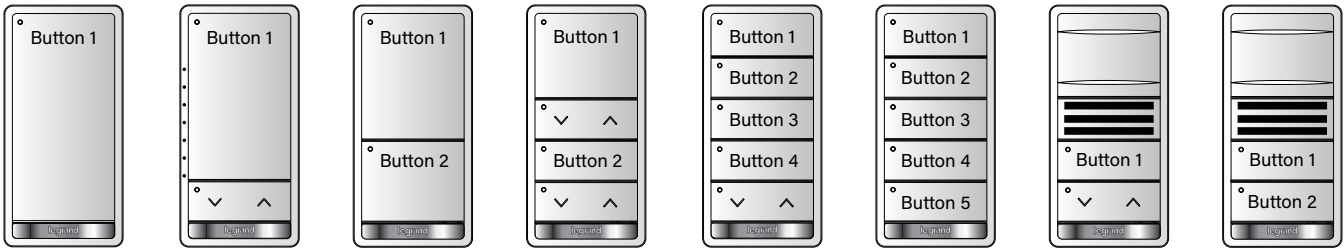
Wireless DLM

LMSW-610-S LMSW-611-S LMSW-622-S LMSW-632-S LMSW-641-S



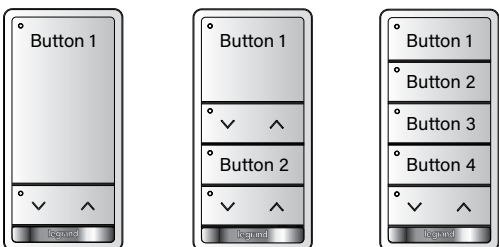
Wired DLM

LMSW-210 LMSW-211 LMSW-220 LMSW-222 LMSW-241 LMSW-250 LMDW-211 LMDW-220



Lighting Control

LMSH-SW211 LMSH-SW222 LMSH-SW241



Shading Control

2. PRODUCT OPTIONS

Switch Color Options

- White
- Ivory
- Black
- Light Almond
- Gray
- Red
- Brown

Enter Quantity

3. ENGRAVING OPTIONS

Engraving options must be entered using the text fields and drop downs provided below. Any engraving requests using handwritten text or digital markups will be rejected.

Engraved text/icons will be centered and top aligned on each button. Select either text **or** an icon.

Text is a **maximum of 10 characters.**

NOTE: Rockers do not have engraving options. The up and down arrows as shown in the diagrams are used.

For help with this form or for any other questions, please call Customer Care at 800-879-8585 Option 1

| | | Select text or icon (per button). | | | | | | | | | | Icon Type | Number | Font Color | |
|----------|------|-----------------------------------|--|--|--|--|--|--|--|--|--|-----------|--------|------------|---------------------------------------|
| Button 1 | Text | | | | | | | | | | | | Icon | | Red available for White Switches only |
| Button 2 | Text | | | | | | | | | | | Icon | | | |
| Button 3 | Text | | | | | | | | | | | Icon | | | |
| Button 4 | Text | | | | | | | | | | | Icon | | | |
| Button 5 | Text | | | | | | | | | | | Icon | | | |

CONFIGURATION NAME (OPTIONAL)

Icon Library

Objects

Light Group Shade Power Fan Sun

Actions

Discuss Show Watch