

Catalog Number • Numéro de Catalogue • Número de Catálogo: EN-SMK-ZB-WH

Countries of Origin: Canada • Pays d'origine: Canada • Países de origen: Canadá

DESCRIPTION

The Wallstation Surface Mount Kit (SMK) allows 2-button, 3-scene, and 5-scene WS, SC, ZC, TW, and SHS series Wallstations to be installed onto any wall surface without the need of an electrical device box.

The Wallstation SMK contains four AAA batteries and provides operating power to the wireless wallstation. When replacing these batteries, **use only alkaline or lithium (UL approved) type batteries**. Install the batteries according to the battery compartment markings.

Wireless Wallstations should be installed in dry, indoor locations only.

PRODUCT SAFETY



When using electrical equipment, basic safety precautions should always be followed, including the following:

- Do not mount near gas or electric heaters or let power supply cords touch hot surfaces.
- Equipment should be mounted in locations and at heights where it will not readily be subjected to tampering by unauthorized personnel.
- The use of accessory equipment is not recommended by Legrand as it may cause an unsafe condition.
- CAUTION - Risk of explosion is incorrect batteries are used. Dispose of used batteries according to the instructions.
- Batteries should only be replaced by maintenance staff or other professional.

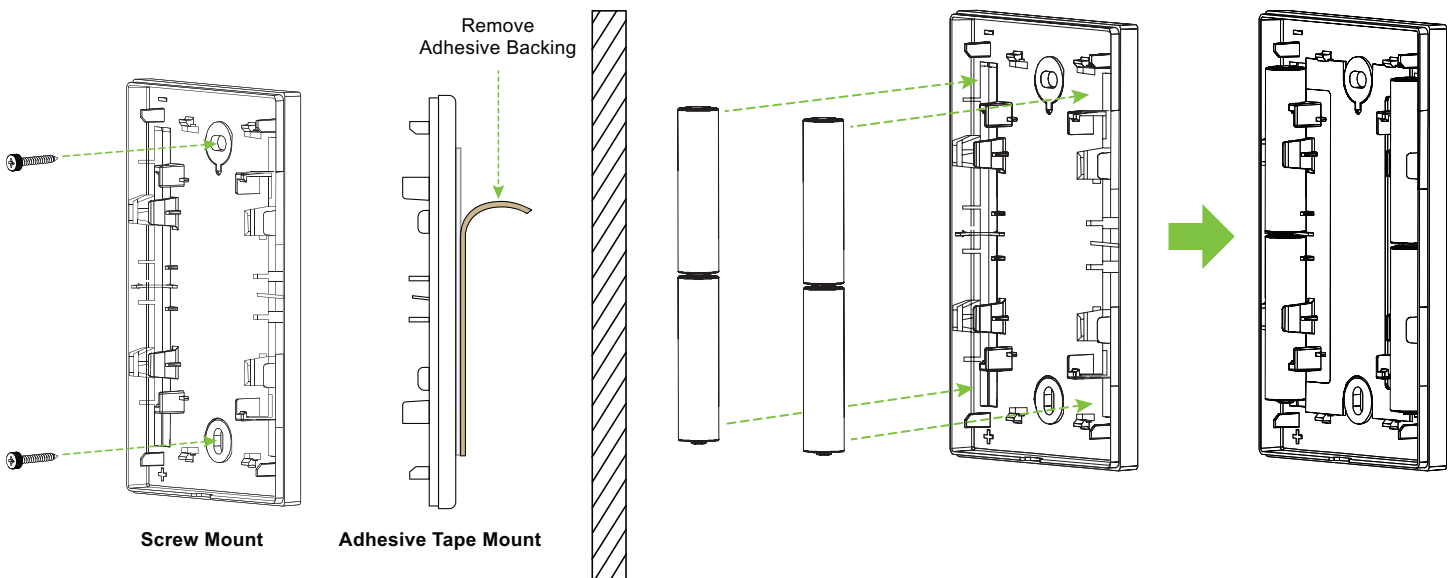
BATTERY SAFETY

- Never introduce the product and/or its batteries to extreme temperatures or altitudes during use, storage, or transportation.
- Never expose batteries to excessive heat such as sunshine, fire or the like.
- Never damage or use damaged devices / batteries.
- Never short circuit the batteries.
- Always ensure batteries are installed with their correct polarity.
- Ensure batteries are removed from the product after they have become exhausted.
- Batteries should only be replaced by maintenance staff or other professional.
- CAUTION: Risk of fire or explosion if the battery is replaced incorrectly.

Surface Mount Kit Installation

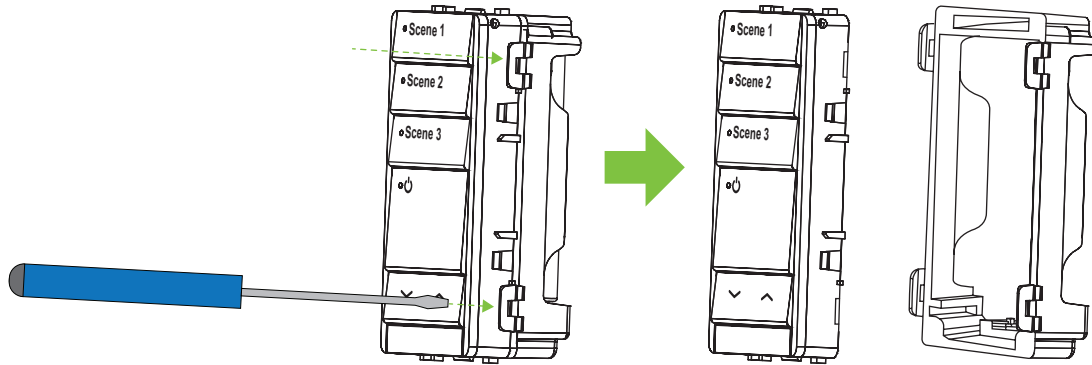
Step 1

Screw in the Surface Mount Kit to the wall or use adhesive tape.



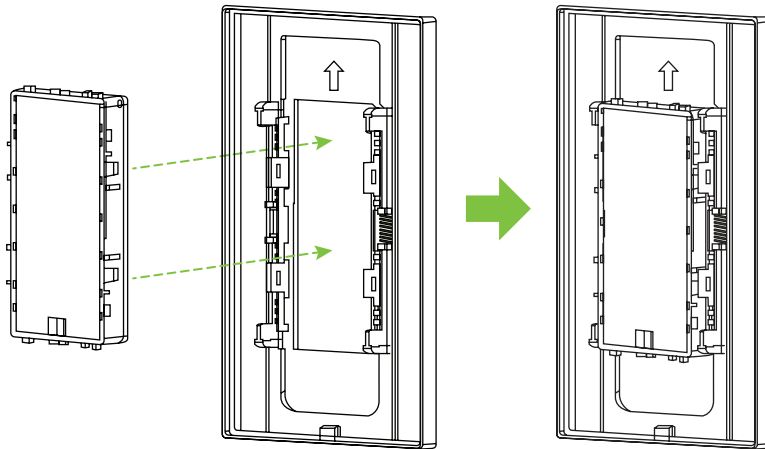
Step 3

Separate the battery housing from the main Wireless Wallstation assembly. Use a small screw driver and gently lift the latches from the Wireless Wallstation assembly.



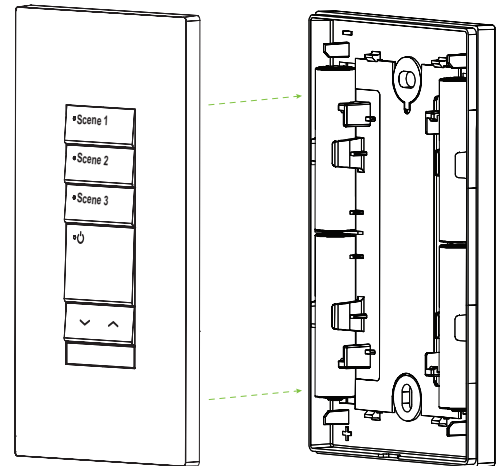
Step 4

Line up and insert the Wallstation assembly into the faceplate attachment. Ensure that the faceplate firmly latches onto all 4 plastic tabs located on the sides of the Wallstation assembly.



Step 5

Attach the Wireless Wallstation assembly to the surface mount kit until it snaps in.



WARRANTY INFORMATION

Wattstopper warrants its products to be free of defects in materials and workmanship for a period of five (5) years. There are no obligations or liabilities on the part of Wattstopper for consequential damages arising out of, or in connection with, the use or performance of this product or other indirect damages with respect to loss of property, revenue or profit, or cost of removal, installation or reinstallation.

INFORMATIONS RELATIVES À LA GARANTIE

Wattstopper garantit que ses produits sont exempts de défauts de matériaux et de fabrication pour une période de cinq (5) ans. Wattstopper ne peut être tenu responsable de tout dommage consécutif causé par ou lié à l'utilisation ou à la performance de ce produit ou tout autre dommage indirect lié à la perte de propriété, de revenus, ou de profits, ou aux coûts d'enlèvement, d'installation ou de réinstallation.

INFORMACIÓN DE LA GARANTÍA

Wattstopper garantiza que sus productos están libres de defectos en materiales y mano de obra por un período de cinco (5) años. No existen obligaciones ni responsabilidades por parte de Wattstopper por daños consecuentes que se deriven o estén relacionados con el uso o el rendimiento de este producto u otros daños indirectos con respecto a la pérdida de propiedad, renta o ganancias, o al costo de extracción, instalación o reinstalación.