



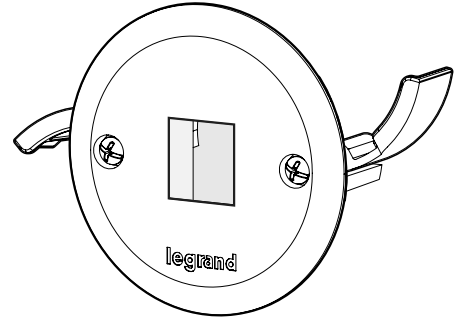
ON-Q

Mini Grommets

Model
HT3401S-WH-2PK
HT3401-WH-4PK

OWNERS GUIDE

Doc. #1507352 08/23 Rev B



IMPORTANT SAFETY INSTRUCTIONS

PLEASE READ ENTIRE MANUAL PRIOR TO USE - SAVE THESE INSTRUCTIONS

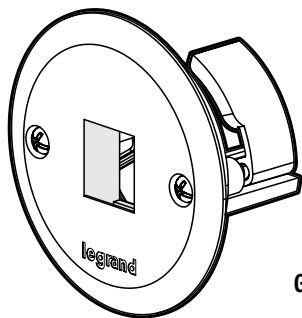
⚠ CAUTION: Avoid potential personal injuries and property damage!

- For low voltage cabling only (HDMI, audio, coax or data cabling), DO NOT run power cords in-wall.
- Please read through these instructions completely to be sure you're comfortable with this easy install process.
- Do not use this product for any purpose not explicitly specified by manufacturer.
- Manufacturer is not responsible for damage or injury caused by incorrect assembly or use.
- If you do not understand these instructions or have doubts about the safety of the installation, assembly or use of this product, contact customer service.

Parts Included

⚠ WARNING: This product contains small items that could be a choking hazard if swallowed.

Before starting assembly, verify all parts are included and undamaged. If any parts are missing or damaged, do not return the damaged item to your dealer; contact Customer Service. Never use damaged parts!

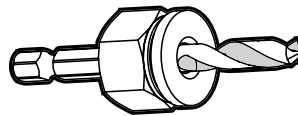


Grommet

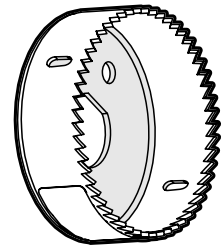
Model
HT3401S-WH-2PK
Qty. 2

Model
HT3401-WH-4PK
Qty. 4

Model
HT3401S-WH-2PK

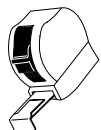


Driver Bit
(hole saw)

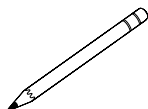


Hole Saw
2 in.

Tools Required



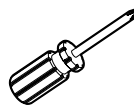
Tape Measure



Pencil



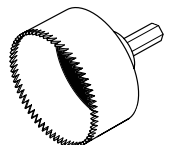
Electric Drill



Phillips Screwdriver

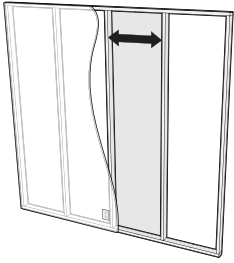
Model
HT3401-WH-4PK

2 inch Hole Saw



STEP 1

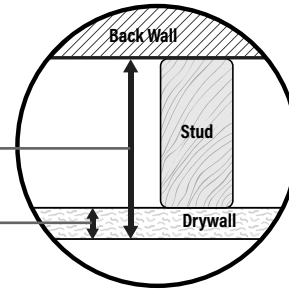
Verify Wall Compatibility



This Cable Kit is designed to fit into both interior and exterior walls constructed with:

❗ **Minimum Space into Wall:** 1 ½ in.

❗ **Minimum Drywall Thickness:** 1/2 in.

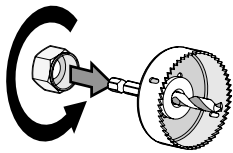
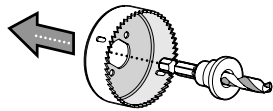
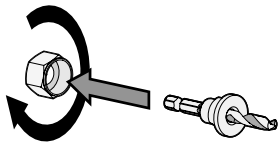


NOTE: Walls with blown-in type insulation may require removal of some insulation inside the cavity.

STEP 2

Drill Holes

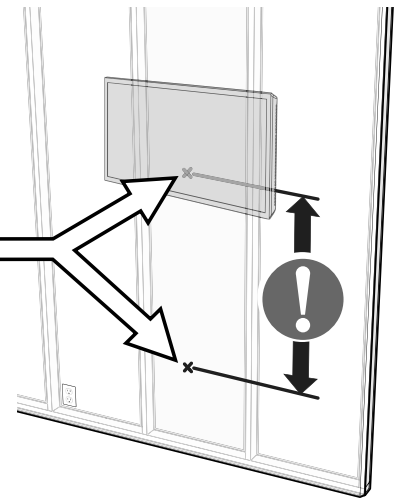
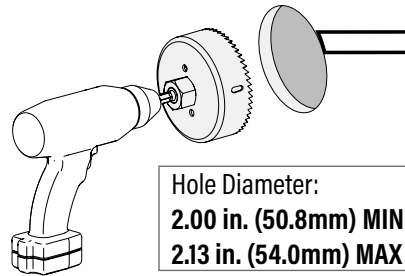
a Assemble Hole Saw



b Drill Holes

Drill the holes at your desired locations.

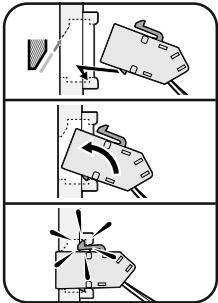
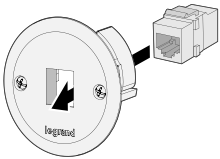
❗ **BEFORE** drilling, Verify your cable length.



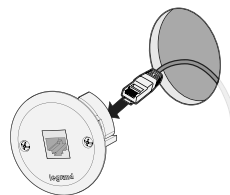
STEP 3

Assemble [one (1) grommet illustrated]

a Insert Keystone Connector



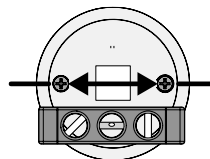
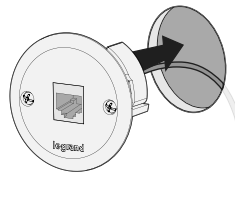
b Route and Connect Cable



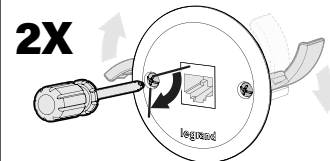
TIP: Use a fish tape to pull cables through the wall.



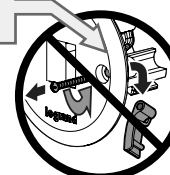
c Insert Grommet



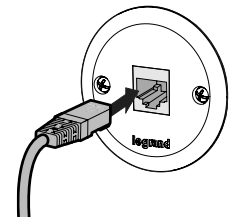
d Lock Grommet



❗ **DO NOT** remove the screws



e Connect Cable



TO REMOVE

