



ENHANCED FIRE PROTECTION WITHOUT ALL THE EXTRA WORK.

NEW, IMPROVED, AND EXPANDED!

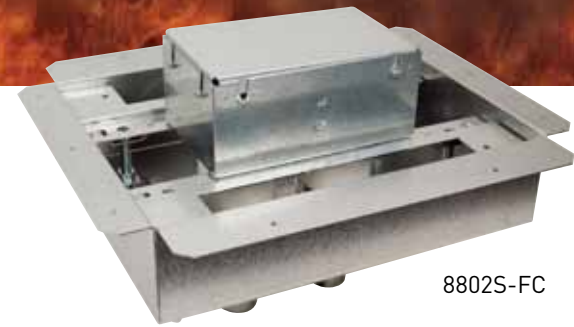
No more having to work on both sides of the floor. The new, improved, and expanded Fire Classified Floor Boxes have been modified to make installation quicker, easier and increases jobsite productivity.

Previous versions were supplied with 1 1/4" trade size service feeds, and required the box to be installed from the top side of the floor, while the fire retardant and insulation had to be installed from the bottom side. These new designs have a range of service feeds from 1 1/4" to 2" trade size, and allow the entire assembly to be installed from the top side, while still exceeding the UL fire rating code requirements for up to a 3-hour floor rating.

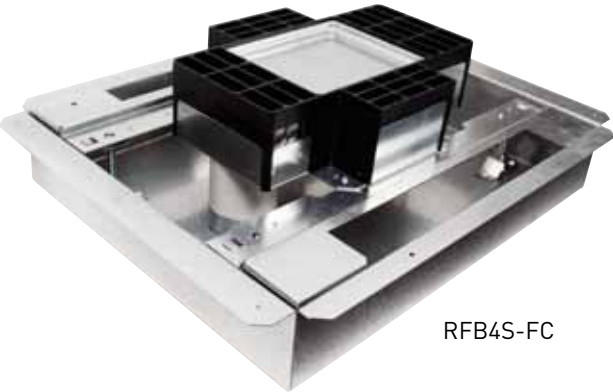
When installed properly, these new Fire Classified Floor Boxes take the guesswork and extra time out of the installation, while providing a higher level of confidence that the building's fire safety requirements have not been compromised.



8802S-FC



RFB4S-FC



EFB8S-FC



NEW, IMPROVED AND EXPANDED!

Wiremold Fire Classified Floor Boxes are offered in a variety of options to best fit the project requirements.

	Part No.	Hourly Classification	Service	Material	Trade Size Service Feeds	Height Adjustment Range
	881FC	1, 1½, 2	1-Gang	Nonmetallic	(2) 1"	3½" to 6"
	880MPFC	1, 1½, 2	1-Gang	Nonmetallic	(2) 1"	3½" to 6"
	8801S-FC	1, 1½, 2	1-Gang	Steel	(1) 1¼"	2" to 5"
	8801S-FC2	1, 1½, 2, 3	1-Gang	Steel	(1) 2"	2" to 6½"
	8802S-FC	1, 1½, 2	2-Gang	Steel	1¼"	2" to 5"
	8802S-FC2	1, 1½, 2, 3	2-Gang	Steel	(1) 1¼" & (1) 2"	2" to 6½"
	8803S-FC	1, 1½, 2	3-Gang	Steel	(2) 1¼"	2" to 5"
	8803S-FC2	1, 1½, 2, 3	3-Gang	Steel	(1) 1¼" & (2) 2"	2" to 6½"
	EFB6S-FC	1, 1½, 2	6-Gang	Steel	(4) 1¼"	2" to 5"
	EFB6S-FC1122	1, 1½, 2, 3	6-Gang	Steel	(2) 1¼" & (2) 2"	2" to 6½"
	EFB6S-FC2222	1, 1½, 2, 3	6-Gang	Steel	(4) 2"	2" to 6½"
	EFB8S-FC	1, 1½, 2	8-Gang	Steel	(4) 1¼"	2" to 5"
	EFB8S-FC1122	1, 1½, 2, 3	8-Gang	Steel	(2) 1¼" & (2) 2"	2" to 6½"
	EFB8S-FC2222	1, 1½, 2, 3	8-Gang	Steel	(4) 2"	2" to 6½"
	EFB10S-FC	1, 1½, 2	10-Gang	Steel	(4) 1¼"	2" to 5"
	EFB10S-FC1122	1, 1½, 2, 3	10-Gang	Steel	(2) 1¼" & (2) 2"	2" to 6½"
	EFB10S-FC2222	1, 1½, 2, 3	10-Gang	Steel	(4) 2"	2" to 6½"

©2014 Legrand All Rights Reserved ED1565R2 0614

designed to be better.™



Electrical Wiring Systems
 60 Woodlawn Street
 West Hartford, CT 06110
 1.877.BY.LEGRAND (295.3472)
 www.legrand.us

570 Applewood Crescent
 Vaughan, Ontario L4K 4B4
 905.738.9195
 www.legrand.ca

Follow Us

