



## Take a closer look at fast-installing Pin & Sleeve products that work for you.

There's no better protection against moisture and industrial contaminants than P&S IEC Pin & Sleeve products. With spring-loaded covers, locking rings, and neoprene gaskets, everything from water to dirt is completely shut out of the electrical system - even if the connection is accidentally submerged!

All P&S Watertight Pin & Sleeve plugs, connectors, receptacles, and inlets bring you the features to enhance versatility, reliability, and safety. For example, North American products come completely ready to wire, for quick, simple installation. And all feature impact- and chemical-resistant thermoplastic construction. Shrouded, nickel-plated, solid-brass pins provide corrosion protection and excellent conductivity. And an exclusive, hinged cord grip eliminates loose parts that get lost.

### Features & Benefits

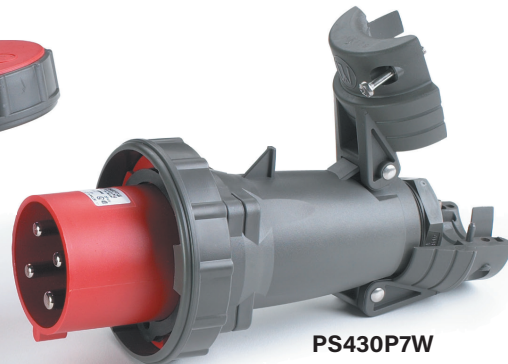
**Arrives ready to wire, with cord grip open** and cable-ready; terminal screws come backed out and ready to wire; front and back body require no disassembly prior to assembly.

**Revolutionary, hinged cord grip** for durable performance and ease of installation.

**Cover with integral neoprene gasket** provides watertight seal.



PS430C7W



PS430P7W

**Locking ring with an integral neoprene gasket** provides watertight seal when plug and connector/receptacle are mated.

**Nylon construction for high-impact** and corrosion resistance.

**Nickel-plated brass pins** provide extra corrosion resistance without sacrificing electrical conductivity.

**Combination-head screws** for added convenience and quick installation.

**Natural-rubber grommets** provide watertight protection at cable entry.

### Field Uses / Vertical Markets

- Food & Beverage
- Petrochemical

- Pulp & Paper Mills
- Water/Waste Water

- Mines
- Shipbuilding

- Refrigeration
- Temporary Power

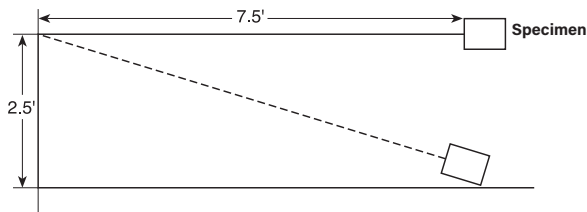
## Technical Information

### Performance

#### Electrical

Dielectric Voltage Withstand	3000V maximum
Maximum Working Voltage	600V RMS, 60Hz - 400Hz
Current Interrupting	Certified for current interrupting at full-rated current
Temperature Rise	Maximum 30°C temperature rise at full-rated current after 50 cycles of 150% overload (at 0.75 to 0.80 power factor)
Endurance	16/20 amp: 5000 cycles with full-rated current and voltage 30/32, 60/63, 100/125 amp: 2000 cycles with full-rated current and voltage applied on every other cycle

#### Mechanical



Impact Resistance	Device dropped 8 times from a height of 2.5 feet with 7.5 feet of cord attached (per CSA 182.1)
-------------------	---

#### Cord Grip Retention

Flammability	Force, Lbs.**	Torque, Ft.lbs.**
16/20A	30	0.4
30/32A	75	0.5
60/63A	150	1.0
100/125A	150	1.0

\*\*Applied to minimum recommended cable size.

	Round portable service cords
Cord Accommodation	Diameters commensurate with the device rating as defined in UL62, CSA C22.2, No. 49, and the harmonized (HAR) European Standard
Terminal Identification	Identified in accordance with North American convention, UL1682, and IEC 309-1, 309-2, rated for copper conductors only
Product Identification	Identification and ratings are labeled on the device housing

#### Environmental

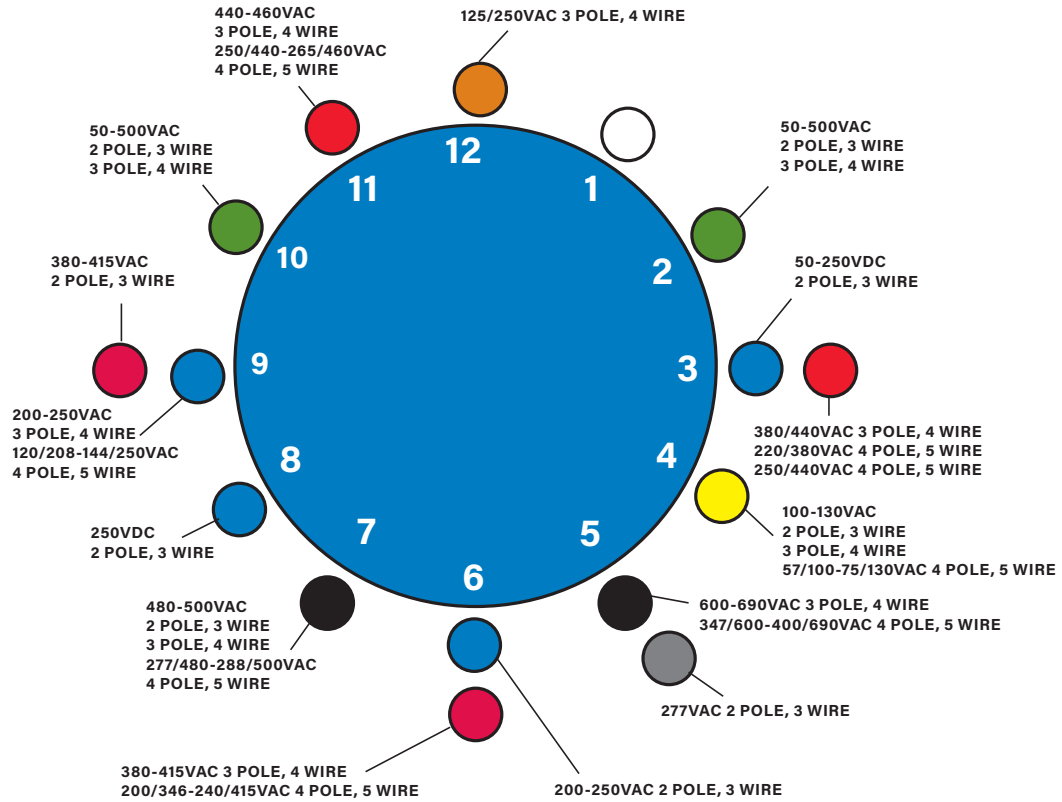
Moisture Resistance	Per IEC 309-1
Flammability	Contact with live parts: V2 or V0 Enclosure: HB or better per UL94
Operating Temperature	+80°C maximum continuous; -50°C minimum without impact
UV Resistance	All enclosure materials are UV stable

### Warranty

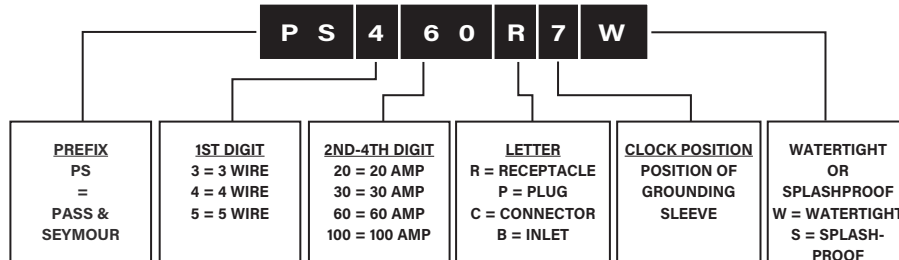
1 Year

**Clocking System**

**IEC 309 Clocking System**  
North American Catalog Numbering System



**North American Catalog Numbering System**



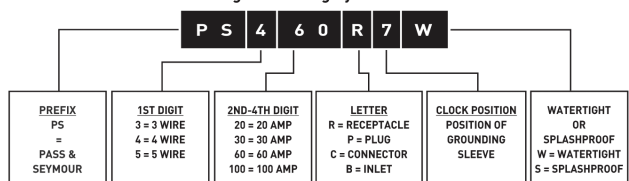
### Ordering Information

### North American & International Watertight Product Offering

	 	CONFIGURATION			VOLTAGE/ COLOR CODING	WATERTIGHT			BACK BOXES		REPLACEMENT PARTS			
		POLES & WIRES	RECEP./ CONN.	PLUG/ INLET		RECEPTACLE	PLUG	CONNECTOR	METALLIC BACK BOX	NON- METALLIC BACK BOX	BODIES		CAPS	
											PLUG	CONNECTOR	RECEPTACLE	CONNECTOR
<b>20 AMPS</b>														
3 WIRE	2P3W			125	PS320R4W	PS320P4W	PS320C4W	PSBB201W	PSBBN201W	PS320P4WR	PS320C4WR	PS320R4WL		
	2P3W			250	PS320R6W	PS320P6W	PS320C6W	PSBB201W	PSBBN201W	PS320P6WR	PS320C6WR	PS320R6WL		
	2P3W			480	PS320R7W	PS320P7W	PS320C7W	PSBB201W	PSBBN201W	PS320P7WR	PS320C7WR	PS320R7WL		
	2P3W			277	PS320R5W	PS320P5W	PS320C5W	PSBB201W	PSBBN201W	PS320P5WR	PS320C5WR	PS320R5WL		
4 WIRE	3P4W			125/250	PS420R12W	PS420P12W	PS420C12W	PSBB202W	PSBBN202W		PS420C12WR	PS420R12WL		
	3P4W			3ø 250	PS420R9W	PS420P9W	PS420C9W	PSBB202W	PSBBN202W	PS420P9WR	PS420C9WR			
	3P4W			3ø 480	PS420R7W	PS420P7W	PS420C7W	PSBB202W	PSBBN202W		PS420C7WR			
	3P4W			3ø 600	PS420R5W	PS420P5W	PS420C5W	PSBB202W	PSBBN202W	PS420P5WR	PS420C5WR			
5 WIRE	4P5W			3øY 120/208	PS520R9W	PS520P9W	PS520C9W	PSBB202W	PSBBN202W	PS520P9WR	PS520C9WR			
	4P5W			3øY 277/480	PS520R7W	PS520P7W	PS520C7W	PSBB202W	PSBBN202W	PS520P7WR	PS520C7WR			
	4P5W			3øY 347/600	PS520R5W	PS520P5W	PS520C5W	PSBB202W	PSBBN202W	PS520P5WR	PS520C5WR			
<b>30 AMPS</b>														
3 WIRE	2P3W			125	PS330R4W	PS330P4W	PS330C4W	PSBB301W	PSBBN301W			PS330R4WL	PS330C4WL	
	2P3W			250	PS330R6W	PS330P6W	PS330C6W	PSBB301W	PSBBN301W				PS330C6WL	
	2P3W			480	PS330R7W	PS330P7W	PS330C7W	PSBB301W	PSBBN301W	PS330P7WR	PS330C7WR	PS330R7WL	PS330C7WL	
4 WIRE	3P4W			125/250	PS430R12W	PS430P12W	PS430C12W	PSBB301W	PSBBN301W	PS430P12WR	PS430C12WR		PS430C12WL	
	3P4W			3ø 250	PS430R9W	PS430P9W	PS430C9W	PSBB301W	PSBBN301W	PS430P9WR	PS430C9WR	PS430R9WL		
	3P4W			3ø 480	PS430R7W	PS430P7W	PS430C7W	PSBB301W	PSBBN301W	PS430P7WR	PS430C7WR			
	3P4W			3ø 600	PS430R5W	PS430P5W	PS430C5W	PSBB301W	PSBBN301W				PS430C5WL	
	3P4W*			380/440	PS430R3W	PS430P3W	PS430C3W	PSBB301W	PSBBN301W	PS430P3WR	PS430C3WR	PS430R3WL		
5 WIRE	4P5W			3øY 120/208	PS530R9W	PS530P9W	PS530C9W	PSBB301W	PSBBN301W	PS530P9WR	PS530C9WR	PS530R9WL	PS530C9WL	
	4P5W			3øY 277/480	PS530R7W	PS530P7W	PS530C7W	PSBB301W	PSBBN301W	PS530P7WR	PS530C7WR	PS530R7WL	PS530C7WL	
	4P5W			3øY 347/600	PS530R5W	PS530P5W	PS530C5W	PSBB301W	PSBBN301W	PS530P5WR	PS530C5WR	PS530R5WL	PS530C5WL	

\*Application specific, reference Page J-3 in the 2017/2018 P&S Catalog.

#### North American Catalog Numbering System



For more information on these and other P&S products refer to our Catalog or visit our web site.

## Ordering Information

### North American & International Watertight Product Offering

	UL UL US	CONFIGURATION		VOLTAGE/ COLOR CODING	WATERTIGHT				BACK BOXES		REPLACEMENT PARTS				
		POLES & WIRES	RECEP./ CONN.		PLUG/ INLET	RECEPTACLE†	PLUG	CONNECTOR	INLET	METALLIC BACK BOX	NON-METALLIC BACK BOX	BODIES		CAPS	
												PLUG	CONNECTOR	RECEPTACLE	CONNECTOR
<b>60 AMPS</b>															
<b>3 WIRE</b>	2P3W			125	PS360R4W	PS360P4W	PS360C4W	PS360B4W	PSBB601W	PSBBN601W		PS360C4WR		PS360C4WL	
	2P3W			250	PS360R6W	PS360P6W	PS360C6W	PS360B6W	PSBB601W	PSBBN601W	PS360P6WR	PS360C6WR			
	2P3W			480	PS360R7W	PS360P7W	PS360C7W	PS360B7W	PSBB601W	PSBBN601W	PS360P7WR	PS360C7WR	PS360R7WL	PS360C7WL	
<b>4 WIRE</b>	3P4W			125/250	PS460R12W	PS460P12W	PS460C12W	PS460B12W	PSBB601W	PSBBN601W	PS460P12WR	PS460C12WR		PS460C12WL	
	3P4W			3ø 250	PS460R9W	PS460P9W	PS460C9W	PS460B9W	PSBB601W	PSBBN601W		PS460C9WR			
	3P4W			3ø 480	PS460R7W	PS460P7W	PS460C7W	PS460B7W	PSBB601W	PSBBN601W					
	3P4W			3ø 600	PS460R5W	PS460P5W	PS460C5W	PS460B5W	PSBB601W	PSBBN601W			PS460R5WL		
<b>5 WIRE</b>	4P5W			3øY 120/208	PS560R9W	PS560P9W	PS560C9W	PS560B9W	PSBB601W	PSBBN601W	PS560P9WR				
	4P5W			3øY 277/480	PS560R7W	PS560P7W	PS560C7W	PS560B7W	PSBB601W	PSBBN601W	PS560P7WR	PS560C7WR	PS560R7WL	PS560C7WL	
	4P5W			3øY 347/600	PS560R5W	PS560P5W	PS560C5W	PS560B5W	PSBB601W	PSBBN601W	PS560P5WR	PS560C5WR	PS560R5WL	PS560C5WL	
	4P5W			200/346 240/415V	PS560R6W	PS560P6W	PS560C6W		PSBB601W	PSBBN601W					
<b>100 AMPS</b>															
<b>3 WIRE</b>	2P3W			125	PS3100R4W	PS3100P4W	PS3100C4W	PS3100B4W	PSBB1001W		PS3100P4WR	PS3100C4WR	PS3100R4WL	PS3100C4WL	
	2P3W			250	PS3100R6W	PS3100P6W	PS3100C6W	PS3100B6W	PSBB1001W			PS3100C6WR	PS3100R6WL	PS3100C6WL	
	2P3W			480	PS3100R7W	PS3100P7W	PS3100C7W	PS3100B7W	PSBB1001W		PS3100P7WR	PS3100C7WR	PS3100R7WL	PS3100C7WL	
<b>4 WIRE</b>	3P4W			125/250	PS4100R12W	PS4100P12W	PS4100C12W	PS4100B12W	PSBB1001W			PS4100C12WR		PS4100C12WL	
	3P4W			3ø 250	PS4100R9W	PS4100P9W	PS4100C9W	PS4100B9W	PSBB1001W			PS4100C9WR		PS4100C9WL	
	3P4W			3ø 480	PS4100R7W	PS4100P7W	PS4100C7W	PS4100B7W	PSBB1001W				PS4100R7WL	PS4100C7WL	
	3P4W			3ø 600	PS4100R5W	PS4100P5W	PS4100C5W	PS4100B5W	PSBB1001W			PS4100C5WR	PS4100R5WL	PS4100C5WL	
<b>5 WIRE</b>	4P5W			3øY 120/208	PS5100R9W	PS5100P9W	PS5100C9W	PS5100B9W	PSBB1001W		PS5100P9WR	PS5100C9WR		PS5100C9WL	
	4P5W			3øY 277/480	PS5100R7W	PS5100P7W	PS5100C7W	PS5100B7W	PSBB1001W		PS5100P7WR		PS5100R7WL	PS5100C7WL	
	4P5W			3øY 347/600	PS5100R5W	PS5100P5W	PS5100C5W	PS5100B5W	PSBB1001W		PS5100P5WR	PS5100C5WR	PS5100R5WL	PS5100C5WL	

† Note: For straight 60 and 100 amp watertight receptacles, add "S" to catalog number after the R, example: PS4100RS5W.

### Ordering Information

### North American & International Watertight Product Offering

	 	CONFIGURATION		VOLTAGE/ COLOR CODING	WATERTIGHT				NON-METALLIC BACK BOX	
		POLES & WIRES	RECEP./CONN.		PLUG/INLET					
						RECEPTACLE†	PLUG	CONNECTOR		INLET
<b>16 AMPS</b>										
3 WIRE	2P3W			100/130	PS316R4W	PS316P4W	PS316C4W		PSBBN202W	
	2P3W			200/250	PS316R6W	PS316P6W	PS316C6W			
	2P3W			380/415	PS316R9W	PS316P9W	PS316C9W			
4 WIRE	3P4W			200/250	PS416R9W	PS416P9W	PS416C9W		PSBBN202W	
	3P4W			380/415	PS416R6W	PS416P6W	PS416C6W			
5 WIRE	4P5W			120/208 144/250	PS516R9W	PS516P9W	PS516C9W			
	4P5W			200/346 240/415	PS516R6W	PS516P6W	PS516C6W			
<b>32 AMPS</b>										
3 WIRE	2P3W			100/130	PS332R4W	PS332P4W	PS332C4W		PSBBN301W	
	2P3W			200/250	PS332R6W	PS332P6W	PS332C6W			
	2P3W			380/415	PS332R9W	PS332P9W	PS332C9W			
4 WIRE	3P4W			200/250	PS432R9W	PS432P9W	PS432C9W			
	3P4W			380/415	PS432R6W	PS432P6W	PS432C6W			
5 WIRE	4P5W			120/208 144/250	PS532R9W	PS532P9W	PS532C9W			
	4P5W			200/346 240/415	PS532R6W	PS532P6W	PS532C6W			
<b>63 AMPS</b>										
3 WIRE	2P3W			100/130	PS363R4W	PS363P4W	PS363C4W		PSBBN601W	
	2P3W			200/250	PS363R6W	PS363P6W	PS363C6W			
4 WIRE	3P4W			200/250	PS463R9W	PS463P9W	PS463C9W			
	3P4W			380/415	PS463R6W	PS463P6W	PS463C6W			
	3P4W			380 (50 Hz) 440 (60 Hz)	PS463R3W	PS463P3W	PS463C3W			
	3P4W			440/460 (60 Hz)	PS463R11W	PS463P11W	PS463C11W			
5 WIRE	3P4W			480/500	PS463R7W	PS463P7W	PS463C7W			
	4P5W			120/208 144/250	PS563R9W	PS563P9W	PS563C9W			
	4P5W			200/346 240/415	PS563R6W	PS563P6W	PS563C6W			
	4P5W			250/440 265/460 (60 Hz)	PS563R11W	PS563P11W	PS563C11W			
5 WIRE	4P5W			220/380 50Hz 250/440 60Hz (60Hz)	PS563R3W	PS563P3W	PS563C3W			
	4P5W			277/480 288/500	PS563R7W	PS563P7W	PS563C7W			
<b>125 AMPS</b>										
3 WIRE	2P3W			100/130	PS3125R4W	PS3125P4W	PS3125C4W	PS3125B4W		
	2P3W			200/250	PS3125R6W	PS3125P6W	PS3125C6W	PS3125B6W		
	2P3W			380/415	PS3125R9W	PS3125P9W	PS3125C9W	PS3125B9W		
4 WIRE	3P4W			200/250	PS4125R9W	PS4125P9W	PS4125C9W	PS4125B9W		
5 WIRE	4P5W			120/208 144/250	PS5125R9W	PS5125P9W	PS5125C9W	PS5125B9W		
	4P5W			200/346 240/415	PS5125R6W	PS5125P6W	PS5125C6W	PS5125B6W		

## Technical Information

### Materials

	16/20 AMP	30/32 AMP	60/63 AMP	100/125 AMP
<b>RECEPTACLES</b>				
Housing	Polyamide 6	Polyamide 6	Valox	Valox
Cover	Polyamide 66	Polyamide 66	Valox	Valox
Cover Spring	Stainless Steel	Stainless Steel	Stainless Steel	Stainless Steel
Sealing Gasket†	Neoprene	Neoprene	Neoprene	Neoprene
Mounting Gasket	Neoprene	Neoprene	Neoprene	Neoprene
Contact Carrier	Polyamide 6	Polyamide 6	Polyamide 6	Polyamide 6
Sleeves	Brass w/Nickel Plate**	Brass w/Nickel Plate**	Brass w/Nickel Plate	Brass w/Nickel Plate
Terminal Screws	Zinc-Plated Steel	Zinc-Plated Steel	Zinc-Plated Steel	Zinc-Plated Steel
<b>INLETS</b>				
Housing	Polyamide 6	Polyamide 6	Valox	Valox
Mounting Flange	Polyamide 6	Polyamide 6	Valox	Valox
Locking Ring**†	Polyamide 66	Polyamide 66	Valox	Valox
Sealing Gasket†	Neoprene	Neoprene	Neoprene	Neoprene
Mounting Gasket	Neoprene	Neoprene	Neoprene	Neoprene
Contact Carrier	Polyamide 6	Polyamide 6	Polyamide 6	Polyamide 6
Pins	Brass w/Nickel Plate**	Brass w/Nickel Plate**	Brass w/Nickel Plate	Brass w/Nickel Plate
Terminal Screws	Zinc-Plated Steel	Zinc-Plated Steel	Zinc-Plated Steel	Zinc-Plated Steel
<b>PLUGS</b>				
Housing	Polyamide 6	Polyamide 6	Valox	Valox
Locking Ring**†	Polyamide 66	Polyamide 66	Valox	Valox
Sealing Gasket†	Neoprene	Neoprene	Neoprene	Neoprene
Housing Gasket	Neoprene	Neoprene	Neoprene	Neoprene
Back Body	Polyamide 6	Polyamide 6	Valox	Valox
Contact Carrier	Polyamide 6	Polyamide 6	Polyamide 6	Polyamide 6
Pins	Brass w/Nickel Plate**	Brass w/Nickel Plate**	Brass w/Nickel Plate	Brass w/Nickel Plate
Terminal Screws	Zinc-Plated Steel	Zinc-Plated Steel	Zinc-Plated Steel	Zinc-Plated Steel
Cord Grip	Polyamide 6	Polyamide 6	Polyamide 66	Polyamide 66
Grommet	Natural Rubber	Natural Rubber	Natural Rubber	Natural Rubber
Cord Grip Screws	Stainless Steel	Stainless Steel	Stainless Steel	Stainless Steel
Assembly Screws	Stainless Steel	Stainless Steel	Stainless Steel	Stainless Steel
<b>CONNECTORS</b>				
Housing	Polyamide 6	Polyamide 6	Valox	Valox
Cover	Polyamide 66	Polyamide 66	Valox	Valox
Cover Spring	Stainless Steel	Stainless Steel	Stainless Steel	Stainless Steel
Sealing Gasket†	Neoprene	Neoprene	Neoprene	Neoprene
Housing Gasket	Neoprene	Neoprene	Neoprene	Neoprene
Back Body	Polyamide 6	Polyamide 6	Valox	Valox
Contact Carrier	Polyamide 6	Polyamide 6	Polyamide 6	Polyamide 6
Sleeves	Brass w/Nickel Plate**	Brass w/Nickel Plate**	Brass w/Nickel Plate	Brass w/Nickel Plate
Terminal Screws	Zinc-Plated Steel	Zinc-Plated Steel	Zinc-Plated Steel	Zinc-Plated Steel
Cord Grip	Polyamide 6	Polyamide 6	Polyamide 66	Polyamide 66
Grommet	Natural Rubber	Natural Rubber	Natural Rubber	Natural Rubber
Cord Grip Screws	Stainless Steel	Stainless Steel	Stainless Steel	Stainless Steel
Assembly Screws	Stainless Steel	Stainless Steel	Stainless Steel	Stainless Steel
<b>METALLIC BACK BOX</b>				
Housing	Cast Aluminum			
Hub	Cast Iron			
<b>NON-METALLIC BACK BOX</b>				
Housing	Polyamide 6			
Hub				

†Does not apply to splashproof.

\*16/20A and 30/32A sleeves and pins on splashproof products are brass only.  
Splashproof inlets and plugs do not have locking rings.

Consult factory for additional details.

---

## Technical Information

### Watertight Pin & Sleeve Plugs 16/20, 30/32, 60/63 & 100/125A

#### Example

- Manufacturer's Identification: Pass & Seymour PS460P7W
- Description: Plug, Power Supply
- Type: 3 Pole, 4 Wire Grounding
- Rating: 60A, 3 Phase 480VAC
- Configuration: IEC 309-2, Clock Position 7, Watertight (IP67)
- 3rd Party Compliance: UL Listed to UL Standard 1682 and CSA 22.2 No. 182.2; UL Classified to IEC 309-1 and IEC 309-2 for Series 2
- UL Classified to IEC Standards 60309-01 (Plugs, Socket Outlets and Couplers for Industrial Purposes) for Series 1 (European) rated voltages and services

### Watertight Pin & Sleeve Connectors 16/20, 30/32, 60/63 & 100/125A

#### Example

- Manufacturer's Identification: Pass & Seymour PS460C7W
- Description: Connector, Power Supply
- Type: 3 Pole, 4 Wire Grounding
- Rating: 60A, 3 Phase 480VAC
- Configuration: IEC 309-2, Clock Position 7, Watertight (IP67)
- 3rd Party Compliance: UL Listed to UL Standard 1682 and CSA 22.2 No. 182.2; UL Classified to IEC 309-1 and IEC 309-2 for Series 2
- UL Classified to IEC Standards 60309-01 (Plugs, Socket Outlets and Couplers for Industrial Purposes) for Series 1 (European) rated voltages and services

---

## Also available

- SteriGuard™ Antimicrobial Devices
- PlugTail® Devices
- SPD & Isolated Ground Devices
- Ground Continuity Monitoring (GCM)
- Straight Blade Plugs & Connectors
- Turnlok® Locking Devices
- Weatherproof Boxes & Covers
- IEC 309 Industrial Products
- Flexcor® Wire Mesh Grips
- Stainless Steel Safety Switches
- Portable GFCIs
- Watertight Plugs & Connectors