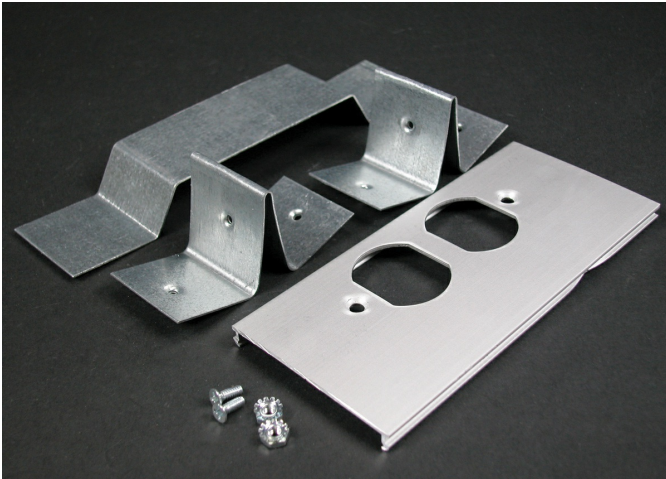




Wiremold  
AL3300 Offset Duplex Receptacle Cover Plate (For Divided Raceway)  
Part No. AL3346DO



Installs of duplex devices in divided aluminum raceway. 6" (152mm) offset divider included. Can also be used with 106 communication frames.

## Features & Benefits

Installs of duplex devices in divided aluminum raceway. 6" (152mm) offset divider included. Can also be used with 106 communication frames.

## Specifications

### General Info

Product Line	Wiremold	UPC Number	786776105155
--------------	----------	------------	--------------

Country Of Origin	Mexico	Application Sector	Commercial
-------------------	--------	--------------------	------------

Standard	cULus Listed Raceway: File E4376 Guide RJPR. Fittings: File E41751 Guide RJPR. Raceway & Fittings: Meet Article 386 of NEC. Multioutlet Assemblies: Meet Article 380 of NEC.	Type	Raceway
----------	--	------	---------

### Dimensions

Product Width US	2.75 in	Product Length US	6.0 in
------------------	---------	-------------------	--------

### Listing Agencies / 3rd Party Agencies

cULus ListingNumber	E41751	cULus Listed	Yes
---------------------	--------	--------------	-----

### Buy American Act Compliance

NAFTA	Yes
-------	-----

---

## Additional Information

---

RoHS Conformant      Yes

Product Environmental Profile      Yes

---

## Technical Information

---

Voltage                      600.0 V

---