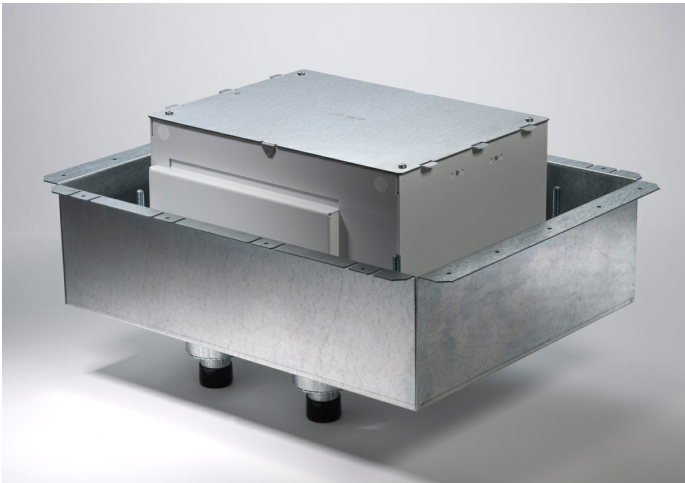




Wiremold
EFB8S-FC2222 Evolution Series 8-Gang Fire-Classified Floor Box
Part No. EFB8S-FC2222



8-Gang Fire Classified Floor Box Pre-assembled installation ready Floor Box has been designed to be installed in above grade concrete floors while maintaining the fire classification of the floor. This box is classified to be used in 1-, 1 1/2-, 2-, or 3-hour fire rated floors. Designed to accept standard size wall plates. Box comes complete with all components needed for initial installation.

Features & Benefits

8-Gang Fire Classified Floor Box Pre-assembled installation ready Floor Box has been designed to be installed in above grade concrete floors while maintaining the fire classification of the floor. This box is classified to be used in 1-, 1 1/2-, 2-, or 3-hour fire rated floors. Designed to accept standard size wall plates. Box comes complete with all components needed for initial installation.

Specifications

General Info

| | | | |
|--------------------|---------------|--------------|---|
| Product Line | Wiremold | UPC Number | 786776184167 |
| Country Of Origin | United States | Construction | Assembled |
| Application Sector | Commercial | Standard | cULus Listed Metallic Outlet Boxes: File E2961 Guide QCIT Meets Article 314.27(C) of NEC. |
| Type | Floor Box | | |

Dimensions

| | | | |
|-------------------|----------|------------------|------------|
| Product Width US | 17.25 in | Product Depth US | 6.25 in |
| Product Length US | 21.75 in | Cubic Capacity | 27.5 cu in |

Listing Agencies / 3rd Party Agencies

| | | | |
|---------------------|-------|--------------|-----|
| cULus ListingNumber | E2961 | cULus Listed | Yes |
|---------------------|-------|--------------|-----|

Buy American Act Compliance

| | |
|-------|-----|
| NAFTA | Yes |
|-------|-----|

Additional Information

| | |
|-----------------|-----|
| RoHS Conformant | Yes |
|-----------------|-----|

Technical Information

| | | | |
|-------------|----------|-------------------|---|
| Cable Entry | Conduits | Number of Outlets | 8 |
|-------------|----------|-------------------|---|
