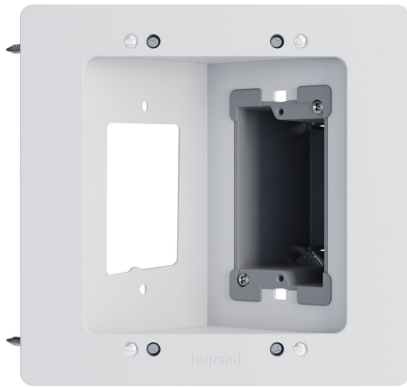




**On-Q**  
**In-Wall Power & Cable Management TV Connection Kit - New Construction/Retrofit (Blank)**  
Part No. HT2302BWH



The Recessed TV Box for power and low voltage supports power and class 2 low voltage behind a wall mounted TV. The design allows for cables and power connections to be tucked away, allowing TVs to be flush against the wall. The box can be mounted directly to a wall stud in new construction or use the wing clamps to secure to drywall in a retrofit applications. The recessed TV Box fits in a standard 2x4 wall, and supports wall thicknesses up to 1in. The Class 2 Low voltage side includes concentric knockout rings to support flexible conduit connections. Product contents include: Recessed TV Box, Removable Trim Ring, 1 Gang Old-Work Junction Box, and necessary mounting hardware.

## Features & Benefits

Provide recessed power and AV connectivity support for a wall mounted TV. The Low voltage side of the box includes concentric knockout rings for support of flexible conduit connections.

Recessed TV box mounts directly to wall studs with included screws for new construction installation. Recessed TV box includes pre-installed wing clamps to secure to drywall in retrofit installations.

Hides both power and AV cables inside the wall for a clean, professional installation. Kit Contents Include: Recessed TV Box, Removable Trim Ring, 1 Gang Old-Work Junction Box, and necessary mounting hardware.

## Specifications

### General Info

Product Line	On-Q	Color	White
Finish	Glossy	Country Of Origin	China
Package Quantity	1	Application Sector	Residential
Standard	Ulus	Warranty Type	5-Year
Type	Wall Box		

### Dimensions

Product Width US	3.8 in	Product Weight US	0.84 lb
Product Height US	8.7 in	Product Length US	8.37 in

### Technical Information

Is Tamper-Resistant	No	Temperature Rating	32° - 122° F
Is Weather Resistant	No	Indoor/Outdoor	Indoor
Voltage	125.0 V		