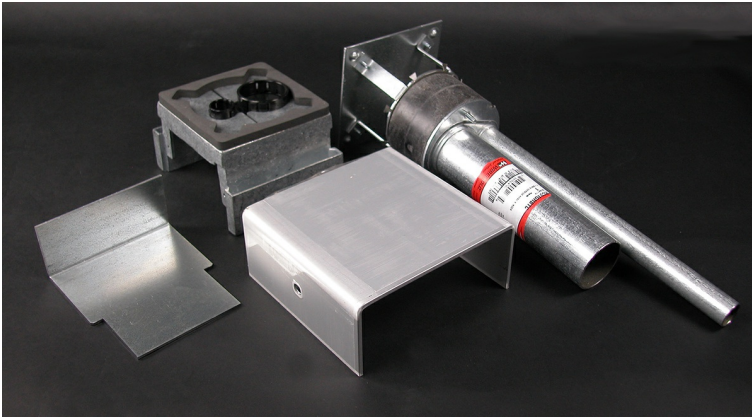




Wiremold
RC91GHBTC Series Poke-Thru Insert With Single-Width Service Head
Part No. RC91GHBTC



Includes insert stem with disposable plate and two-gang service head with housing, base, scrub water gasket, and barrier. Service head and insert install together to make a poke-thru assembly. Combine with faceplates (sold separately) to complete service head assembly. Shown assembled. Service head is shipped unassembled with the insert stem. NOTE: Assembled with scrub water gasket. For use on tile or carpet floors. Requires a minimum 3 1/16" (78mm) diameter hole.

Features & Benefits

Includes insert stem with disposable plate and two-gang service head with housing, base, scrub water gasket, and barrier. Service head and insert install together to make a poke-thru assembly. Combine with faceplates (sold separately) to complete service head assembly. Shown assembled. Service head is shipped unassembled with the insert stem. NOTE: Assembled with scrub water gasket. For use on tile or carpet floors. Requires a minimum 3 1/16" (78mm) diameter hole.

Specifications

General Info

Product Line	Wiremold	UPC Number	786564021674
Country Of Origin	Mexico	Construction	Assembled
Number of Knockouts	2	Application Sector	Residential/Commercial
Standard	cULus Listed Metallic Outlet Boxes: File E2961 Guide QCIT, cULus Listed Nonmetallic Outlet Boxes & Fittings Classified for Fire Resistance: File R8209 Guide CEYY Meets Article 300.21 300.22[C] &314 of NEC	Type	Poke-Thru

Dimensions

Cubic Capacity	24.5 cu in
----------------	------------

Listing Agencies / 3rd Party Agencies

cULus ListingNumber	E2961	cULus Listed	Yes
---------------------	-------	--------------	-----

Buy American Act Compliance

NAFTA	Yes
-------	-----

Additional Information

RoHS Conformant	Yes	Product Environmental Profile	Yes
-----------------	-----	-------------------------------	-----