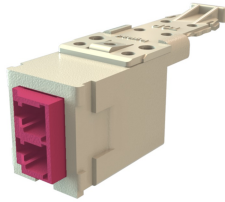




Legrand pre-polished keyed LC multimode and single-mode connectors provide the same ease of installation and high-quality performance as our line of standard LC pre-polished connectors. Up to twelve keys/colors of connectors are possible with unique physical keying configurations.

NOTE: The keyed connector and adapter colors must match, or the keying will prevent them from carrying the signal. LC Keyed connectors won't mate with standard LC adapters.



Features & Benefits

Keyed LC adapters have the option to be keyed in the front only (user's side) or on both sides (user's and technician's) depending on the security requirements.

Keyed workstation adapter modules are available for TracJack® and High Density Jack (HDJ) style Face plates and surface mount boxes for complete system design flexibility.

All Legrand keyed LC fiber products are engineered to be compatible with other Legrand products to provide an end to end, data center to desktop solution.

Specifications

General Info

Type Adapter

Technical Information

Adapter Color	Magenta	Repeatability	< 0.2dB typical change,500 matings
Adapter Front	Keyed	Compatibility	HDJ, PHDHJU
Connector Type	LC Duplex	Temperature Rating	27 to +75°C
Adapter Rear	Keyed		